

For Research Use Only

ENOPH1 Polyclonal antibody

Catalog Number: 11763-1-AP

Featured Product

2 Publications



Basic Information

Catalog Number:

11763-1-AP

Size:

150ul, Concentration: 300 ug/ml by Nanodrop;

Source:

Rabbit

Isotype:

IgG

Immunogen Catalog Number:

AG2360

GenBank Accession Number:

BC001317

GeneID (NCBI):

58478

UNIPROT ID:

Q9UHY7

Full Name:

enolase-phosphatase 1

Calculated MW:

13 kDa / 29 kDa

Observed MW:

29-35 kDa

Purification Method:

Antigen affinity purification

Recommended Dilutions:

WB 1:500-1:2000

Applications

Tested Applications:

WB, ELISA

Cited Applications:

WB, IF

Species Specificity:

human

Cited Species:

human

Positive Controls:

WB : K-562 cells, HL-60 cells

Background Information

ENOPH1, also named as MASA and MSTP145, belongs to the HAD-like hydrolase superfamily and MasA/MtnC family. ENOPH1 is a newly identified enzyme involved in L-methionine biosynthesis, which is associated with anxiety and depression. Studies have shown that ENOPH1 plays a crucial role in promoting the proliferation and migration of glioma cells (PMID: 32654229). ENOPH1 has 2 isoforms with the molecular mass of 13 and 29 kDa.

Notable Publications

Author	Pubmed ID	Journal	Application
Li Su	30066900	Oncol Rep	WB
Yuan Zhang	27630541	Front Mol Neurosci	WB, IF

Storage

Storage:

Store at -20°C. Stable for one year after shipment.

Storage Buffer:

PBS with 0.02% sodium azide and 50% glycerol pH 7.3.

Aliquoting is unnecessary for -20°C storage

*** 20ul sizes contain 0.1% BSA

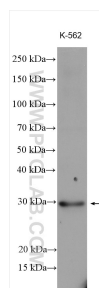
For technical support and original validation data for this product please contact:

T: 1 (888) 4PTGLAB (1-888-478-4522) (toll free in USA), or 1(312) 455-8498 (outside USA)

E: proteintech@ptglab.com
W: ptglab.com

This product is exclusively available under Proteintech Group brand and is not available to purchase from any other manufacturer.

Selected Validation Data



K-562 cells were subjected to SDS PAGE followed by western blot with 11763-1-AP (ENOPH1 antibody) at dilution of 1:1000 incubated at room temperature for 1.5 hours.