

For Research Use Only

ITLN1/2 Polyclonal antibody

Catalog Number: 11770-1-AP

18 Publications



Basic Information

Catalog Number:

11770-1-AP

Size:

150ul, Concentration: 450 ug/ml by Nanodrop and 293 ug/ml by Bradford method using BSA as the standard;

Source:

Rabbit

Isotype:

IgG

Immunogen Catalog Number:

AG2424

GenBank Accession Number:

BC020664

GeneID (NCBI):

55600

UNIPROT ID:

Q8WWAO

Full Name:

intelectin 1 (galactofuranose binding)

Calculated MW:

313 aa, 35 kDa

Observed MW:

35-40 kDa

Purification Method:

Antigen affinity purification

Recommended Dilutions:

WB 1:500-1:3000

IP 0.5-4.0 ug for 1.0-3.0 mg of total protein lysate

IHC 1:200-1:800

Applications

Tested Applications:

WB, IHC, IP, ELISA

Cited Applications:

WB, IHC, IF

Species Specificity:

human, mouse, rat

Cited Species:

human, mouse

Positive Controls:

WB : mouse colon tissue,

IP : mouse appendix tissue,

IHC : human stomach tissue,

Note-IHC: suggested antigen retrieval with TE buffer pH 9.0; (*) Alternatively, antigen retrieval may be performed with citrate buffer pH 6.0

Background Information

ITLN1, also named as Intelectin 1, has no effect on basal glucose uptake but enhances insulin-stimulated glucose uptake in adipocytes. ITLN1 is a glycoprotein made up of three 40 kDa subunits cross-linked by disulfide bonds making up a 120-kDa homo-trimer of 295 amino acids and N-linked oligosaccharides (PMID: 17621593). It may play a role in the defense system against microorganisms. Human intelectin-1 is expressed in intestinal goblet cells, and is present at about 200 ng/mL in serum. Intelectin-1 was also shown to be expressed in human endothelial cells and adipocytes of human abdominal adipose tissue. (PMID: 22768319, PMID: 28640441)

Notable Publications

Author	Pubmed ID	Journal	Application
Yaqin Zhang	31897204	Oncol Lett	WB, IHC
Yalong Wang	31753849	J Exp Med	IHC, IF
Nongnuch Singrang	35337980	Fish Shellfish Immunol	WB

Storage

Storage:

Store at -20°C. Stable for one year after shipment.

Storage Buffer:

PBS with 0.02% sodium azide and 50% glycerol pH 7.3.

Aliquoting is unnecessary for -20°C storage

*** 20ul sizes contain 0.1% BSA

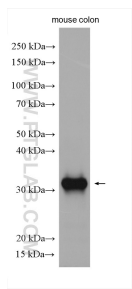
For technical support and original validation data for this product please contact:

T: 1 (888) 4PTGLAB (1-888-478-4522) (toll free in USA), or 1(312) 455-8498 (outside USA)

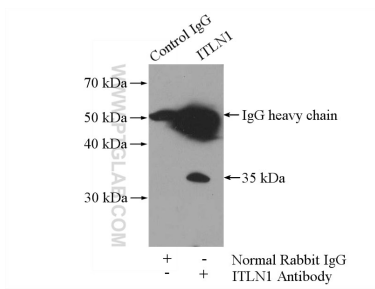
E: proteintech@ptglab.com
W: ptglab.com

This product is exclusively available under Proteintech Group brand and is not available to purchase from any other manufacturer.

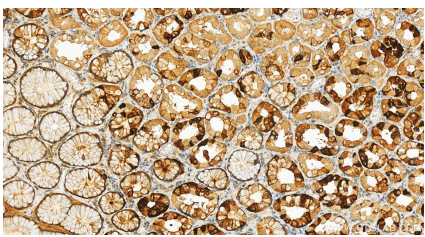
Selected Validation Data



mouse colon tissue were subjected to SDS PAGE followed by western blot with 11770-1-AP (ITLN1/2 antibody) at dilution of 1:1500 incubated at room temperature for 1.5 hours.



IP result of anti-ITLN1/2 (IP:11770-1-AP, 4ug; Detection:11770-1-AP 1:500) with mouse appendix tissue lysate 4000ug.



Immunohistochemical analysis of paraffin-embedded human stomach tissue slide using 11770-1-AP (ITLN1/2 antibody) at dilution of 1:400 (under 20x lens). Heat mediated antigen retrieval with Tris-EDTA buffer (pH 9.0).