

For Research Use Only

# ITLN1/2 Polyclonal antibody, PBS Only

Catalog Number: 11770-1-PBS



## Basic Information

<b>Catalog Number:</b> 11770-1-PBS	<b>GenBank Accession Number:</b> BC020664	<b>Purification Method:</b> Antigen affinity purification
<b>Size:</b> 100ug, Concentration: 1 mg/ml by Nanodrop;	<b>GeneID (NCBI):</b> 55600	
<b>Source:</b> Rabbit	<b>UNIPROT ID:</b> Q8WWAO	
<b>Isotype:</b> IgG	<b>Full Name:</b> intelectin 1 (galactofuranose binding)	
<b>Immunogen Catalog Number:</b> AG2424	<b>Calculated MW:</b> 313 aa, 35 kDa	
	<b>Observed MW:</b> 35-40 kDa	

## Applications

**Tested Applications:**  
WB, IHC, IP, Indirect ELISA

**Species Specificity:**  
human, mouse, rat

## Background Information

ITLN1, also named as Intelectin 1, has no effect on basal glucose uptake but enhances insulin-stimulated glucose uptake in adipocytes. ITLN1 is a glycoprotein made up of three 40 kDa subunits cross-linked by disulfide bonds making up a 120-kDa homo-trimer of 295 amino acids and N-linked oligosaccharides (PMID: 17621593). It may play a role in the defense system against microorganisms. Human intelectin-1 is expressed in intestinal goblet cells, and is present at about 200 ng/mL in serum. Intelectin-1 was also shown to be expressed in human endothelial cells and adipocytes of human abdominal adipose tissue. (PMID: 22768319, PMID: 28640441)

## Storage

**Storage:**  
Store at -80°C.

**Storage Buffer:**  
PBS Only

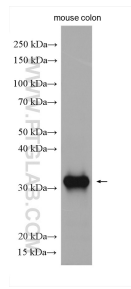
For technical support and original validation data for this product please contact:

T: 1 (888) 4PTGLAB (1-888-478-4522) (toll free in USA), or 1(312) 455-8498 (outside USA)

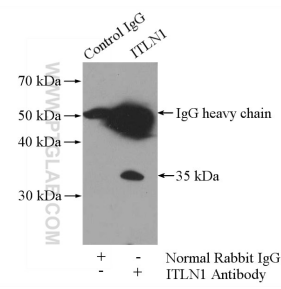
E: [proteintech@ptglab.com](mailto:proteintech@ptglab.com)  
W: [ptglab.com](http://ptglab.com)

**This product is exclusively available under Proteintech Group brand and is not available to purchase from any other manufacturer.**

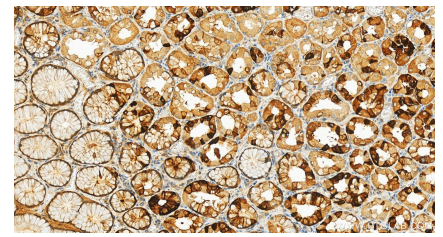
## Selected Validation Data



mouse colon tissue were subjected to SDS PAGE followed by western blot with 11770-1-AP (ITLN1/2 antibody) at dilution of 1:1500 incubated at room temperature for 1.5 hours. This data was developed using the same antibody clone with 11770-1-PBS in a different storage buffer formulation.



IP result of anti-ITLN1/2 (IP:11770-1-AP, 4ug; Detection:11770-1-AP 1:500) with mouse appendix tissue lysate 4000ug. This data was developed using the same antibody clone with 11770-1-PBS in a different storage buffer formulation.



Immunohistochemical analysis of paraffin-embedded human stomach tissue slide using 11770-1-AP (ITLN1/2 antibody) at dilution of 1:400 (under 20x lens). Heat mediated antigen retrieval with Tris-EDTA buffer (pH 9.0). This data was developed using the same antibody clone with 11770-1-PBS in a different storage buffer formulation.