

For Research Use Only

# CYP4B1 Polyclonal antibody

Catalog Number: 11771-1-AP

1 Publications



## Basic Information

### Catalog Number:

11771-1-AP

### Size:

150ul, Concentration: 500 ug/ml by Nanodrop and 267 ug/ml by Bradford method using BSA as the standard;

### Source:

Rabbit

### Isotype:

IgG

### Immunogen Catalog Number:

AG2416

### GenBank Accession Number:

BC017758

### GeneID (NCBI):

1580

### UNIPROT ID:

P13584

### Full Name:

cytochrome P450, family 4, subfamily B, polypeptide 1

### Calculated MW:

512 aa, 59 kDa

### Observed MW:

55-59 kDa

### Purification Method:

Antigen affinity purification

### Recommended Dilutions:

WB 1:500-1:1500

IP 0.5-4.0 ug for 1.0-3.0 mg of total protein lysate

IHC 1:20-1:200

## Applications

### Tested Applications:

WB, IP, IHC, ELISA

### Cited Applications:

IHC

### Species Specificity:

human, mouse, rat

### Cited Species:

human

**Note-IHC: suggested antigen retrieval with TE buffer pH 9.0; (\*) Alternatively, antigen retrieval may be performed with citrate buffer pH 6.0**

### Positive Controls:

WB : mouse lung tissue, A549 cells, rat kidney tissue

IP : mouse lung tissue,

IHC : human lung cancer tissue,

## Notable Publications

Author	Pubmed ID	Journal	Application
Shihua Bao	36355621	Hum Reprod	IHC

## Storage

### Storage:

Store at -20°C. Stable for one year after shipment.

### Storage Buffer:

PBS with 0.02% sodium azide and 50% glycerol pH 7.3.

Aliquoting is unnecessary for -20°C storage

\*\*\* 20ul sizes contain 0.1% BSA

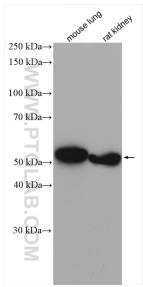
For technical support and original validation data for this product please contact:

T: 1 (888) 4PTGLAB (1-888-478-4522) (toll free in USA), or 1(312) 455-8498 (outside USA)

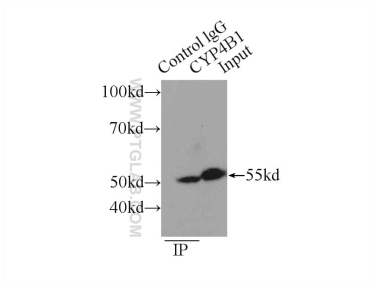
E: [proteintech@ptglab.com](mailto:proteintech@ptglab.com)  
W: [ptglab.com](http://ptglab.com)

This product is exclusively available under Proteintech Group brand and is not available to purchase from any other manufacturer.

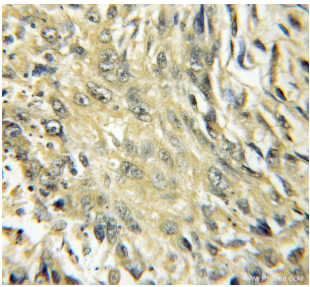
Selected Validation Data



Various lysates were subjected to SDS PAGE followed by western blot with 11771-1-AP (CYP4B1 antibody) at dilution of 1:1500 incubated at room temperature for 1.5 hours.



IP result of anti-CYP4B1 (IP:11771-1-AP, 4ug; Detection:11771-1-AP 1:500) with mouse lung tissue lysate 4000ug.



Immunohistochemical analysis of paraffin-embedded human lung cancer using 11771-1-AP (CYP4B1 antibody) at dilution of 1:50 (under 10x lens).