

For Research Use Only

SFRS6 Polyclonal antibody

Catalog Number: 11772-1-AP

4 Publications



Basic Information

Catalog Number:

11772-1-AP

Size:

150ul, Concentration: 450 ug/ml by Nanodrop;

Source:

Rabbit

Isotype:

IgG

Immunogen Catalog Number:

AG2412

GenBank Accession Number:

BC006832

GeneID (NCBI):

6431

UNIPROT ID:

Q13247

Full Name:

splicing factor, arginine/serine-rich 6

Calculated MW:

344 aa, 40 kDa

Observed MW:

40 kDa

Purification Method:

Antigen affinity purification

Recommended Dilutions:

WB 1:500-1:3000

Applications

Tested Applications:

WB, ELISA

Cited Applications:

WB

Species Specificity:

human

Cited Species:

human, mouse

Positive Controls:

WB: HeLa cells, MCF-7 cells

Background Information

SR proteins have a characteristic C-terminal Ser/Arg-rich repeat (RS domain) of variable length and constitute a family of highly conserved nuclear phosphoproteins that can function as both essential and alternative pre-mRNA splicing factors [PMID:7556075]. SRSF6 has a pivotal role in the TF exon 5 definition, an event essential for flt1 biosynthesis. Besides, up- or down regulation of SRSF6 alters the splicing of several tumor suppressors and oncogenes to generate the oncogenic isoforms and reduce the tumor suppressive isoforms [PMID:23132731].

Notable Publications

Author	Pubmed ID	Journal	Application
Norihiro Okada	34082065	Gene	WB
Yuhan Chen	29942010	Nat Commun	WB
Norihiro Okada	35515992	Data Brief	WB

Storage

Storage:

Store at -20°C. Stable for one year after shipment.

Storage Buffer:

PBS with 0.02% sodium azide and 50% glycerol pH 7.3.

Aliquoting is unnecessary for -20°C storage

*** 20ul sizes contain 0.1% BSA

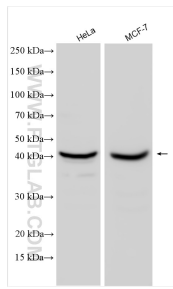
For technical support and original validation data for this product please contact:

T: 1 (888) 4PTGLAB (1-888-478-4522) (toll free in USA), or 1(312) 455-8498 (outside USA)

E: proteintech@ptglab.com
W: ptglab.com

This product is exclusively available under Proteintech Group brand and is not available to purchase from any other manufacturer.

Selected Validation Data



Various lysates were subjected to SDS PAGE followed by western blot with 11772-1-AP (SFRS6 antibody) at dilution of 1:1500 incubated at room temperature for 1.5 hours.