

For Research Use Only

IgG Kappa Light Chain Polyclonal antibody

Catalog Number: 11781-1-AP



Basic Information

Catalog Number: 11781-1-AP	GenBank Accession Number: BC030814	Purification Method: Antigen affinity purification
Size: 150ul , Concentration: 600 ug/ml by Nanodrop and 320 ug/ml by Bradford method using BSA as the standard;	GeneID (NCBI): 28299	Recommended Dilutions: WB 1:500-1:2000 IHC 1:500-1:2000
Source: Rabbit	Full Name: immunoglobulin kappa variable 1-5	
Isotype: IgG	Calculated MW: 239 aa, 26 kDa	
Immunogen Catalog Number: AG2406	Observed MW: 26 kDa, 13 kDa	

Applications

Tested Applications: WB, IHC, ELISA	Positive Controls:
Species Specificity: human, mouse	WB : human plasma tissue, A549 cells, K-562 cells, mouse spleen tissue
Note-IHC: suggested antigen retrieval with TE buffer pH 9.0; (*) Alternatively, antigen retrieval may be performed with citrate buffer pH 6.0	IHC : human tonsillitis tissue,

Background Information

This antibody detects the kappa light chain of human IgG.

Storage

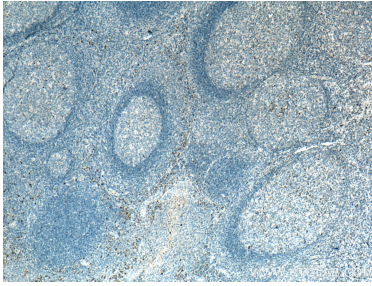
Storage:
Store at -20°C. Stable for one year after shipment.
Storage Buffer:
PBS with 0.02% sodium azide and 50% glycerol pH 7.3.
Aliquoting is unnecessary for -20°C storage

*** 20ul sizes contain 0.1% BSA

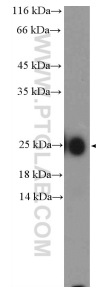
For technical support and original validation data for this product please contact:
T: 1 (888) 4PTGLAB (1-888-478-4522) (toll free in USA), or 1(312) 455-8498 (outside USA)
E: proteintech@ptglab.com
W: ptglab.com

This product is exclusively available under Proteintech Group brand and is not available to purchase from any other manufacturer.

Selected Validation Data



Immunohistochemical analysis of paraffin-embedded human tonsillitis tissue slide using 11781-1-AP (IgG Kappa Light Chain antibody) at dilution of 1:1000 (under 4x lens). heat mediated antigen retrieval with Tris-EDTA buffer (pH 9.0).



human plasma (0.3ug) were subjected to SDS PAGE followed by western blot with 11781-1-AP (IgG light chain (Kappa) Antibody) at dilution of 1:1000 incubated at room temperature for 1.5 hours.