

For Research Use Only

NIPSNAP3B Polyclonal antibody, PBS Only

Catalog Number: **11789-1-PBS**



Basic Information

Catalog Number:

11789-1-PBS

Size:

100ug , Concentration: 1 mg/ml by Nanodrop;

Source:

Rabbit

Isotype:

IgG

Immunogen Catalog Number:

AG2377

GenBank Accession Number:

BC017914

GeneID (NCBI):

55335

UNIPROT ID:

Q9BS92

Full Name:

nipsnap homolog 3B (C. elegans)

Calculated MW:

247 aa, 28 kDa

Observed MW:

28-30 kDa

Purification Method:

Antigen affinity purification

Applications

Tested Applications:

WB, IHC, Indirect ELISA

Species Specificity:

human, mouse, rat

Background Information

NIPSNAP3B is a member of the NIPSNAP family with putative roles in vesicular trafficking (PMID: 15177564). The gene of NIPSNAP3B maps to chromosome 9q31.3, and encodes a 247-amino-acid protein with a calculated molecular mass of 28 kDa. NIPSNAP3B gene has been reported to be highly associated with low bone mineral density (BMD) variation in postmenopausal Caucasian women (PMID: 19922823).

Storage

Storage:

Store at -80°C.

Storage Buffer:

PBS Only

For technical support and original validation data for this product please contact:

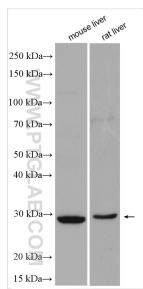
T: 1 (888) 4PTGLAB (1-888-478-4522) (toll free in USA), or 1(312) 455-8498 (outside USA)

E: proteintech@ptglab.com

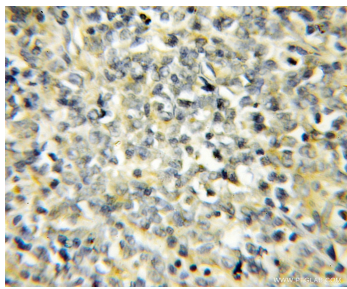
W: ptglab.com

This product is exclusively available under Proteintech Group brand and is not available to purchase from any other manufacturer.

Selected Validation Data



Various lysates were subjected to SDS PAGE followed by western blot with 11789-1-AP (NIPSNAP3B antibody) at dilution of 1:2000 incubated at room temperature for 1.5 hours. This data was developed using the same antibody clone with 11789-1-PBS in a different storage buffer formulation.



Immunohistochemical analysis of paraffin-embedded human lymphoma using 11789-1-AP (NIPSNAP3B antibody) at dilution of 1:50 (under 10x lens). This data was developed using the same antibody clone with 11789-1-PBS in a different storage buffer formulation.