

For Research Use Only

# TPD52L2 Polyclonal antibody, PBS Only

Catalog Number: 11795-1-PBS

Featured Product



## Basic Information

**Catalog Number:**

11795-1-PBS

**Size:**

100ug, Concentration: 1 mg/ml by Nanodrop;

**Source:**

Rabbit

**Isotype:**

IgG

**Immunogen Catalog Number:**

AG2364

**GenBank Accession Number:**

BC006804

**GeneID (NCBI):**

7165

**UNIPROT ID:**

O43399

**Full Name:**

tumor protein D52-like 2

**Calculated MW:**

206 aa, 22 kDa

**Observed MW:**

25-30 kDa

**Purification Method:**

Antigen affinity purification

## Applications

**Tested Applications:**

WB, IHC, IF/ICC, IP, Indirect ELISA

**Species Specificity:**

human, mouse, rat

## Background Information

Tumor protein D52-like proteins (TPD52) are small coiled-coil motif bearing proteins that were first identified in breast carcinoma. Three human TPD52 members had been identified, named hD52 (TPD52), hD53 (TPD52L1), and hD54 (TPD52L2). The most important characteristic of the protein family is a highly conserved coiled-coil motif that is required for homo- and heteromeric interaction with other TPD52-like proteins. TPD52 and related proteins have been implicated in cell proliferation, apoptosis, and vesicle trafficking. TPD52L2 has five isoforms produced by alternative splicing, and its multiple sites have been identified to be phosphorylated. Interaction of TPD52L2 with MAL2, a novel member of the MAL proteolipid family, may be required for the role of TPD52L2 in vesicle transport.

## Storage

**Storage:**

Store at -80°C.

**Storage Buffer:**

PBS only, pH7.3

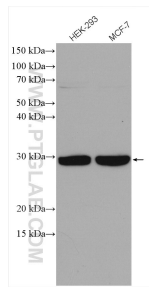
For technical support and original validation data for this product please contact:

T: 1 (888) 4PTGLAB (1-888-478-4522) (toll free in USA), or 1(312) 455-8498 (outside USA)

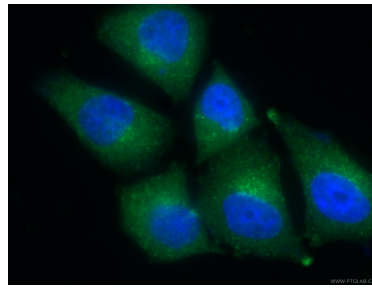
E: [proteintech@ptglab.com](mailto:proteintech@ptglab.com)  
W: [ptglab.com](http://ptglab.com)

This product is exclusively available under Proteintech Group brand and is not available to purchase from any other manufacturer.

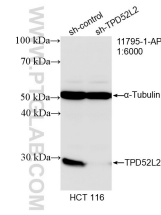
## Selected Validation Data



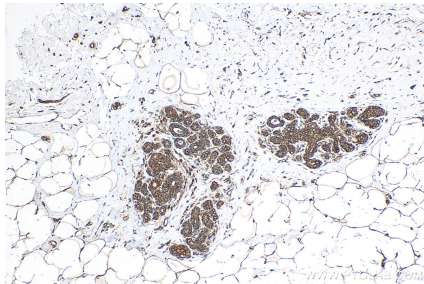
Various lysates were subjected to SDS PAGE followed by western blot with 11795-1-AP (TPD52L2 antibody) at dilution of 1:800 incubated at room temperature for 1.5 hours. This data was developed using the same antibody clone with 11795-1-PBS in a different storage buffer formulation.



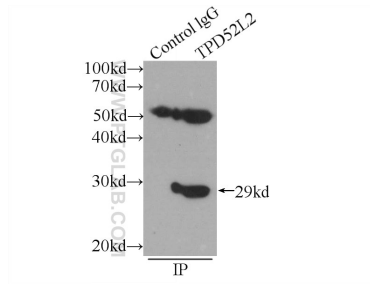
Immunofluorescent analysis of (4% PFA) fixed HepG2 cells using 11795-1-AP (TPD52L2 antibody), at dilution of 1:200 and CoraLite® 488-Conjugated AffiniPure Goat Anti-Rabbit IgG(H+L). This data was developed using the same antibody clone with 11795-1-PBS in a different storage buffer formulation.



WB result of TPD52L2 antibody (11795-1-AP; 1:600; incubated at room temperature for 1.5 hours) with sh-Control and sh-TPD52L2 transfected HCT 116 cells. This data was developed using the same antibody clone with 11795-1-PBS in a different storage buffer formulation.



Immunohistochemical analysis of paraffin-embedded human breast cancer tissue slide using 11795-1-AP (TPD52L2 antibody) at dilution of 1:200 (under 10x lens). Heat mediated antigen retrieval with Tris-EDTA buffer (pH 9.0). This data was developed using the same antibody clone with 11795-1-PBS in a different storage buffer formulation.



IP result of anti-TPD52L2 (IP:11795-1-AP, 3ug; Detection:11795-1-AP 1:800) with HEK-293 cells lysate 2400ug. This data was developed using the same antibody clone with 11795-1-PBS in a different storage buffer formulation.