

For Research Use Only

KYNU Polyclonal antibody

Catalog Number: 11796-1-AP

Featured Product

13 Publications



Basic Information

Catalog Number:

11796-1-AP

Size:

150ul, Concentration: 500 ug/ml by Nanodrop;

Source:

Rabbit

Isotype:

IgG

Immunogen Catalog Number:

AG2365

GenBank Accession Number:

BC000879

GeneID (NCBI):

8942

UNIPROT ID:

Q16719

Full Name:

kynureninase (L-kynurenine hydrolase)

Calculated MW:

465aa, 52 kDa; 307aa, 35 kDa

Observed MW:

45-52 kDa

Purification Method:

Antigen affinity purification

Recommended Dilutions:

WB 1:1000-1:4000

IHC 1:50-1:500

IF/ICC 1:250-1:1000

Applications

Tested Applications:

WB, IHC, IF/ICC, ELISA

Cited Applications:

WB, IHC, IF

Species Specificity:

human, mouse, rat

Cited Species:

human, mouse, rat

Note-IHC: suggested antigen retrieval with TE buffer pH 9.0; (*) Alternatively, antigen retrieval may be performed with citrate buffer pH 6.0

Positive Controls:

WB : HeLa cells, A549 cells, HepG2 cells, rat liver tissue

IHC : human breast cancer tissue,

IF/ICC : HeLa cells, HepG2 cells

Background Information

KYNU(kynureninase) is also named as L-kynurenine hydrolase and belongs to the kynureninase family. It is a pyridoxal-5'-phosphate-(pyridoxal-P)-dependent enzyme that catalyses the cleavage of L-kynurenine and L-3-hydroxykynurenine into anthranilic and 3-hydroxyanthranilic acids, respectively(PMID:8706755). In SDS-PAGE, it can detect a 48 kDa band lower than the predicted molecular weight of 52 kDa due to limited proteolysis of the enzyme which might occur during handling of the protein(PMID:8706755). This protein is a 95-kD homodimer predominantly located in the cytoplasm(PMID:9180257). It has 2 isoforms produced by alternative splicing.

Notable Publications

Author	Pubmed ID	Journal	Application
C Ci	31419330	Clin Exp Dermatol	WB
Yingying Song	35568375	Virol Sin	WB
Bo Wang	31115516	Mol Med Rep	WB

Storage

Storage:

Store at -20°C. Stable for one year after shipment.

Storage Buffer:

PBS with 0.02% sodium azide and 50% glycerol pH 7.3.

Aliquoting is unnecessary for -20°C storage

*** 20ul sizes contain 0.1% BSA

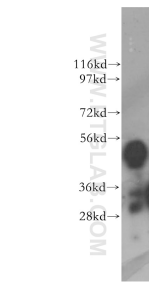
For technical support and original validation data for this product please contact:

T: 1 (888) 4PTGLAB (1-888-478-4522) (toll free in USA), or 1(312) 455-8498 (outside USA)

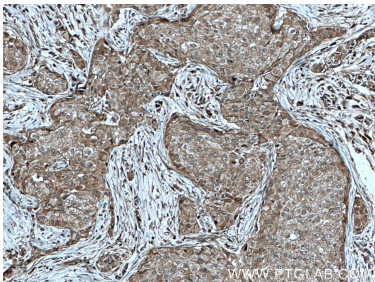
E: proteintech@ptglab.com
W: ptglab.com

This product is exclusively available under Proteintech Group brand and is not available to purchase from any other manufacturer.

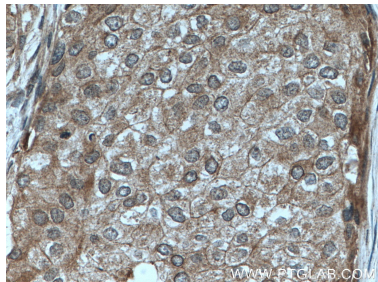
Selected Validation Data



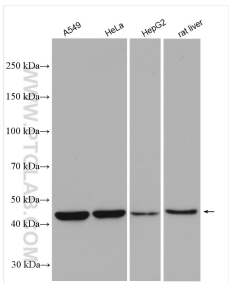
HeLa cells were subjected to SDS PAGE followed by western blot with 11796-1-AP (KYNU antibody) at dilution of 1:2000 incubated at room temperature for 1.5 hours.



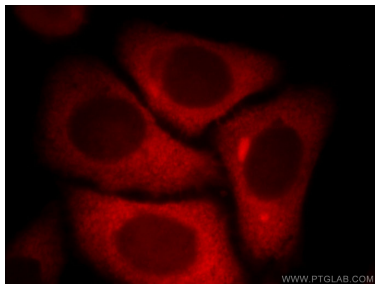
Immunohistochemical analysis of paraffin-embedded human breast cancer tissue slide using 11796-1-AP (KYNU antibody) at dilution of 1:200 (under 10x lens. Heat mediated antigen retrieval with Tris-EDTA buffer (pH 9.0).



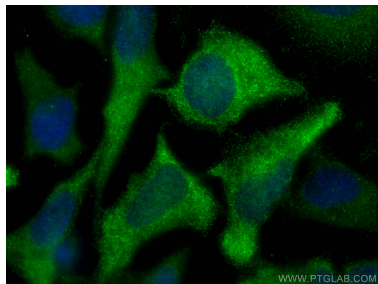
Immunohistochemical analysis of paraffin-embedded human breast cancer tissue slide using 11796-1-AP (KYNU antibody) at dilution of 1:200 (under 40x lens. Heat mediated antigen retrieval with Tris-EDTA buffer (pH 9.0).



Various lysates were subjected to SDS PAGE followed by western blot with 11796-1-AP (KYNU antibody) at dilution of 1:3000 incubated at room temperature for 1.5 hours.



Immunofluorescent analysis of HepG2 cells, using KYNU antibody 11796-1-AP at 1:25 dilution and Rhodamine-labeled goat anti-rabbit IgG (red).



Immunofluorescent analysis of (-20°C Methanol) fixed HeLa cells using KYNU antibody (11796-1-AP) at dilution of 1:500 and CoraLite®488-Conjugated AffiniPure Goat Anti-Rabbit IgG(H+L).