

For Research Use Only

# SIRP beta 1/CD172b Polyclonal antibody, PBS Only

Catalog Number: 11811-1-PBS



## Basic Information

**Catalog Number:**

11811-1-PBS

**Size:**

100ug, Concentration: 1 mg/ml by Nanodrop;

**Source:**

Rabbit

**Isotype:**

IgG

**Immunogen Catalog Number:**

AG2478

**GenBank Accession Number:**

BC025286

**GeneID (NCBI):**

10326

**UNIPROT ID:**

O00241

**Full Name:**

signal-regulatory protein beta 1

**Calculated MW:**

43 kDa

**Observed MW:**

43 kDa

**Purification Method:**

Antigen affinity purification

## Applications

**Tested Applications:**

WB, Indirect ELISA

**Species Specificity:**

human

## Background Information

SIRP Beta 1 is a member of the signal-regulatory-protein (SIRP) family, and also belongs to the immunoglobulin superfamily. SIRP family members are cell surface signaling receptors differentially expressed in leukocytes and the central nervous system. SIRP Beta 1 interacts with TYROBP/DAP12, a protein bearing immunoreceptor tyrosine-based activation motifs. SIRP Beta 1 also participates in the recruitment of tyrosine kinase SYK.

## Storage

**Storage:**

Store at -80°C.

**Storage Buffer:**

PBS Only

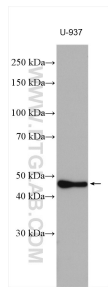
For technical support and original validation data for this product please contact:

T: 1 (888) 4PTGLAB (1-888-478-4522) (toll free in USA), or 1(312) 455-8498 (outside USA)

E: [proteintech@ptglab.com](mailto:proteintech@ptglab.com)  
W: [ptglab.com](http://ptglab.com)

**This product is exclusively available under Proteintech Group brand and is not available to purchase from any other manufacturer.**

## Selected Validation Data



U-937 cells were subjected to SDS PAGE followed by western blot with 11811-1-AP (SIRP BETA 1 antibody) at dilution of 1:1000 incubated at room temperature for 1.5 hours. This data was developed using the same antibody clone with 11811-1-PBS in a different storage buffer formulation.