

For Research Use Only

CILP2 Polyclonal antibody

Catalog Number: 11813-1-AP

1 Publications



Basic Information

Catalog Number:

11813-1-AP

Size:

150ul, Concentration: 350 ug/ml by Nanodrop and 247 ug/ml by Bradford method using BSA as the standard;

Source:

Rabbit

Isotype:

IgG

Immunogen Catalog Number:

AG2366

GenBank Accession Number:

BC034926

GeneID (NCBI):

148113

UNIPROT ID:

Q8IUL8

Full Name:

cartilage intermediate layer protein 2

Calculated MW:

126 kDa

Observed MW:

90 kDa

Purification Method:

Antigen affinity purification

Recommended Dilutions:

WB 1:500-1:2000

IF/ICC 1:200-1:800

Applications

Tested Applications:

WB, IF/ICC, ELISA

Cited Applications:

WB

Species Specificity:

human, mouse

Cited Species:

mouse

Positive Controls:

WB : HEK-293 cells, K-562 cells, SW480 cells, mouse brain tissue

IF/ICC : HEK-293 cells,

Background Information

CILP2, also named as Cartilage intermediate layer protein 2, is a 1156 amino acid protein, which is expressed in articular chondrocytes but not in knee meniscal cartilage cells. CILP2 localizes to the intermediate to deep zone of articular cartilage. CILP2 may play a role in cartilage scaffolding. Given the full-length molecular mass of CILP2 is 125 kDa, but the most CILP2 protein in articular cartilage is cleaved, mostly likely at the furin cleavage site. CILP2 protein is detected as a major band on SDS-page migrating at about 90 kDa. (PMID: 21880736)

Notable Publications

Author	Pubmed ID	Journal	Application
Mengtian Zhang	36103829	Cell Rep	WB

Storage

Storage:

Store at -20°C. Stable for one year after shipment.

Storage Buffer:

PBS with 0.02% sodium azide and 50% glycerol pH 7.3.

Aliquoting is unnecessary for -20°C storage

*** 20ul sizes contain 0.1% BSA

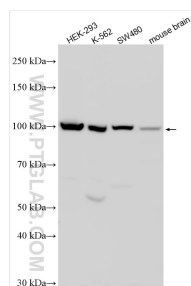
For technical support and original validation data for this product please contact:

T: 1 (888) 4PTGLAB (1-888-478-4522) (toll free in USA), or 1(312) 455-8498 (outside USA)

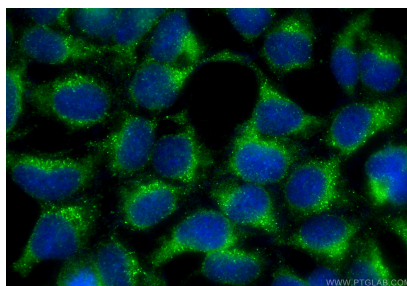
E: proteintech@ptglab.com
W: ptglab.com

This product is exclusively available under Proteintech Group brand and is not available to purchase from any other manufacturer.

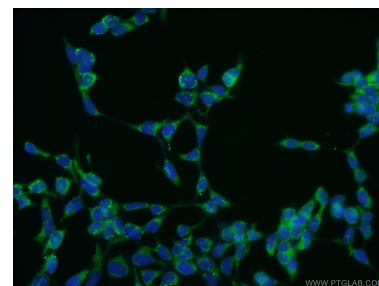
Selected Validation Data



Various lysates were subjected to SDS PAGE followed by western blot with 11813-1-AP (CILP2 antibody) at dilution of 1:1000 incubated at room temperature for 1.5 hours.



Immunofluorescent analysis of (-20°C Ethanol) fixed HEK-293 cells using CILP2 antibody (11813-1-AP) at dilution of 1:400 and CoraLite® 488-Conjugated Goat Anti-Rabbit IgG(H+L) (SA00013-2).



Immunofluorescent analysis of HEK-293 cells using 11813-1-AP (CILP2 antibody) at dilution of 1:50 and Alexa Fluor 488-conjugated AffiniPure Goat Anti-Rabbit IgG(H+L).