

For Research Use Only

# CILP2 Polyclonal antibody, PBS Only

Catalog Number:11813-1-PBS



## Basic Information

<b>Catalog Number:</b> 11813-1-PBS	<b>GenBank Accession Number:</b> BC034926	<b>Purification Method:</b> Antigen affinity purification
<b>Size:</b> 100ug , Concentration: 1 mg/ml by Nanodrop;	<b>GeneID (NCBI):</b> 148113	
<b>Source:</b> Rabbit	<b>UNIPROT ID:</b> Q8IUL8	
<b>Isotype:</b> IgG	<b>Full Name:</b> cartilage intermediate layer protein 2	
<b>Immunogen Catalog Number:</b> AG2366	<b>Calculated MW:</b> 126 kDa	
	<b>Observed MW:</b> 90 kDa	

## Applications

**Tested Applications:**  
WB, IF/ICC, Indirect ELISA

**Species Specificity:**  
human, mouse

## Background Information

CILP2, also named as Cartilage intermediate layer protein 2, is a 1156 amino acid protein, which is expressed in articular chondrocytes but not in knee meniscal cartilage cells. CILP2 localizes to the intermediate to deep zone of articular cartilage. CILP2 may play a role in cartilage scaffolding. Given the full-length molecular mass of CILP2 is 125 kDa, but the most CILP2 protein in articular cartilage is cleaved, mostly likely at the furin cleavage site. CILP2 protein is detected as a major band on SDS-page migrating at about 90 kDa. (PMID: 21880736)

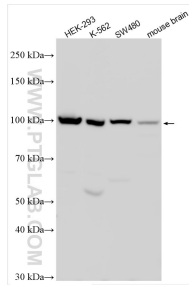
## Storage

**Storage:**  
Store at -80°C.  
**Storage Buffer:**  
PBS Only

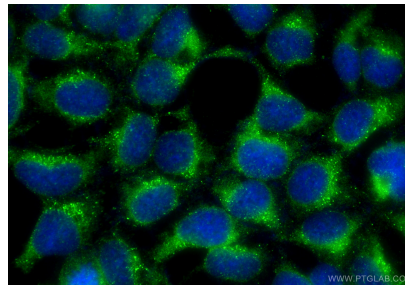
For technical support and original validation data for this product please contact:  
T: 1 (888) 4PTGLAB (1-888-478-4522) (toll free in USA), or 1(312) 455-8498 (outside USA)      E: proteintech@ptglab.com  
W: ptglab.com

**This product is exclusively available under Proteintech Group brand and is not available to purchase from any other manufacturer.**

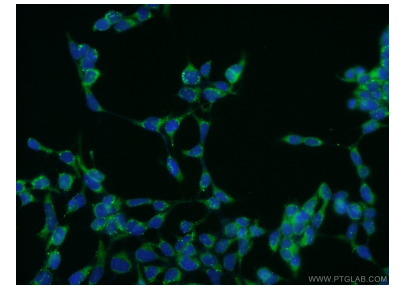
## Selected Validation Data



Various lysates were subjected to SDS PAGE followed by western blot with 11813-1-AP (CILP2 antibody) at dilution of 1:1000 incubated at room temperature for 1.5 hours. This data was developed using the same antibody clone with 11813-1-PBS in a different storage buffer formulation.



Immunofluorescent analysis of (-20°C Ethanol) fixed HEK-293 cells using CILP2 antibody (11813-1-AP) at dilution of 1:400 and CoraLite® 488-Conjugated Goat Anti-Rabbit IgG(H+L) (SA00013-2). This data was developed using the same antibody clone with 11813-1-PBS in a different storage buffer formulation.



Immunofluorescent analysis of HEK-293 cells using 11813-1-AP (CILP2 antibody) at dilution of 1:50 and Alexa Fluor 488-conjugated AffiniPure Goat Anti-Rabbit IgG(H+L). This data was developed using the same antibody clone with 11813-1-PBS in a different storage buffer formulation.