

For Research Use Only

# RFC3 Polyclonal antibody

Catalog Number: 11814-1-AP

Featured Product

5 Publications



## Basic Information

**Catalog Number:**

11814-1-AP

**Size:**

150ul, Concentration: 260 ug/ml by Nanodrop and 233 ug/ml by Bradford method using BSA as the standard;

**Source:**

Rabbit

**Isotype:**

IgG

**Immunogen Catalog Number:**

AG2269

**GenBank Accession Number:**

BC000149

**GeneID (NCBI):**

5983

**UNIPROT ID:**

P40938

**Full Name:**

replication factor C (activator 1) 3, 38kDa

**Calculated MW:**

40 aa, 6 kDa

**Observed MW:**

38 kDa

**Purification Method:**

Antigen affinity purification

**Recommended Dilutions:**

WB 1:500-1:3000

IP 0.5-4.0 ug for 1.0-3.0 mg of total protein lysate

IF/ICC 1:50-1:500

## Applications

**Tested Applications:**

WB, IF/ICC, IP, ELISA

**Cited Applications:**

WB, ColP

**Species Specificity:**

human, mouse, rat

**Cited Species:**

human, mouse

**Positive Controls:**

WB : human liver tissue, HeLa cells, human heart tissue

IP : HeLa cells,

IF/ICC : HepG2 cells,

## Background Information

RFC3, also known as RFC38, is a 356 amino acid protein, which localizes in nucleus. Replication factor C (RFC) is a component of the eukaryotic DNA polymerase. In all eukaryotic cell cycles, it is essential for DNA duplication, DNA injury repair and checkpoint control. RFC consists of five subunits (RFC1-5). The interrelationships between RFC2, RFC3 and the c-MYC oncogene (transcription factor) can induce cell division and proliferation. RFC3 is associated with liver, breast, esophageal and ovarian cancer, and serves a critical role in cellular proliferation, invasion and metastasis. RFC3 exists two isoforms with molecular weight of 34 kDa and 38-40 kDa.

## Notable Publications

Author	Pubmed ID	Journal	Application
Jianguo Yang	33691114	Cell Rep	WB
Kai Ren	34930359	Virology	WB
Wei Wang	38682160	Acta Biochim Biophys Sin (Shanghai)	WB

## Storage

**Storage:**

Store at -20°C. Stable for one year after shipment.

**Storage Buffer:**

PBS with 0.02% sodium azide and 50% glycerol pH 7.3.

Aliquoting is unnecessary for -20°C storage

\*\*\* 20ul sizes contain 0.1% BSA

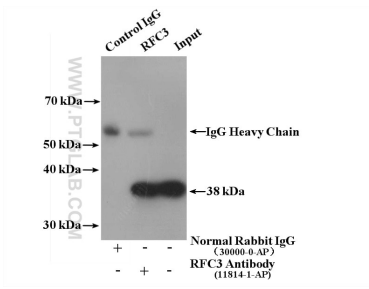
For technical support and original validation data for this product please contact:

T: 1 (888) 4PTGLAB (1-888-478-4522) (toll free in USA), or 1(312) 455-8498 (outside USA)

E: [proteintech@ptglab.com](mailto:proteintech@ptglab.com)  
W: [ptglab.com](http://ptglab.com)

This product is exclusively available under Proteintech Group brand and is not available to purchase from any other manufacturer.

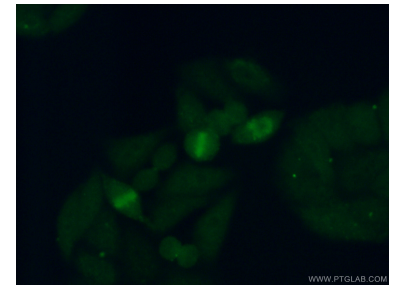
## Selected Validation Data



HeLa cells were subjected to SDS PAGE followed by western blot with 11814-1-AP (RFC3 antibody) at dilution of 1:300.



human liver tissue were subjected to SDS PAGE followed by western blot with 11814-1-AP (RFC3 antibody) at dilution of 1:500 incubated at room temperature for 1.5 hours.



Immunofluorescent analysis of (10% Formaldehyde) fixed HepG2 cells using 11814-1-AP (RFC3 antibody) at dilution of 1:50 and Alexa Fluor 488-conjugated Goat Anti-Rabbit IgG(H+L).