

For Research Use Only

SS18L2 Polyclonal antibody, PBS Only

Catalog Number: 11817-1-PBS



Basic Information

Catalog Number:

11817-1-PBS

Size:

100ug , Concentration: 1 mg/ml by Nanodrop;

Source:

Rabbit

Isotype:

IgG

Immunogen Catalog Number:

AG2384

GenBank Accession Number:

BC017804

GeneID (NCBI):

51188

UNIPROT ID:

Q9UHA2

Full Name:

synovial sarcoma translocation gene on chromosome 18-like 2

Calculated MW:

77 aa, 9 kDa

Observed MW:

6-7 kDa

Purification Method:

Antigen affinity purification

Applications

Tested Applications:

WB, IHC, Indirect ELISA

Species Specificity:

human, mouse

Storage

Storage:

Store at -80°C.

Storage Buffer:

PBS only, pH7.3

For technical support and original validation data for this product please contact:

T: 1 (888) 4PTGLAB (1-888-478-4522) (toll free in USA), or 1(312) 455-8498 (outside USA)

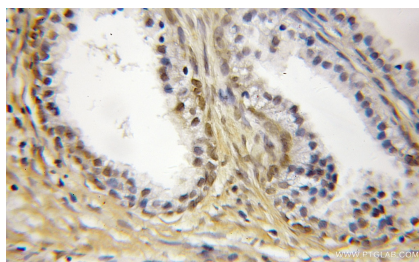
E: proteintech@ptglab.com
W: ptglab.com

This product is exclusively available under Proteintech Group brand and is not available to purchase from any other manufacturer.

Selected Validation Data



human liver tissue were subjected to SDS PAGE followed by western blot with 11817-1-AP (SS18L2 antibody) at dilution of 1:500 incubated at room temperature for 1.5 hours. This data was developed using the same antibody clone with 11817-1-PBS in a different storage buffer formulation.



Immunohistochemical analysis of paraffin-embedded human prostate cancer using 11817-1-AP (SS18L2 antibody) at dilution of 1:50 (under 25x lens). This data was developed using the same antibody clone with 11817-1-PBS in a different storage buffer formulation.