

For Research Use Only

C4BPA Polyclonal antibody

Catalog Number: 11819-1-AP **4 Publications**



Basic Information

Catalog Number: 11819-1-AP	GenBank Accession Number: BC022312	Purification Method: Antigen affinity purification
Size: 150ul, Concentration: 500 ug/ml by Nanodrop and 533 ug/ml by Bradford method using BSA as the standard;	GeneID (NCBI): 722	Recommended Dilutions: WB 1:500-1:1000 IHC 1:20-1:200
Source: Rabbit	UNIPROT ID: P04003	
Isotype: IgG	Full Name: complement component 4 binding protein, alpha	
Immunogen Catalog Number: AG2387	Calculated MW: 597 aa, 67 kDa	
	Observed MW: 70 kDa	

Applications

Tested Applications: WB, IHC, ELISA	Positive Controls: WB : human blood tissue, human plasma tissue IHC : human liver cancer tissue,
Cited Applications: WB, IHC	
Species Specificity: human	
Cited Species: human	

Note-IHC: suggested antigen retrieval with TE buffer pH 9.0; (*) Alternatively, antigen retrieval may be performed with citrate buffer pH 6.0

Background Information

C4b-binding protein (C4BP) is a large oligomeric glycoprotein, present in plasma at a concentration of approximately 200 mg/L (PMID: 24218259). It is the main inhibitor of the classical complement and lectin pathway. C4BP is composed of two polypeptides (alpha and beta chains), which have molecular weights of 70 and 45 kDa, respectively (PMID: 7561113). This polyclonal antibody is raised against the C4BP alpha chain (C4BPA).

Notable Publications

Author	Pubmed ID	Journal	Application
Guoxing Feng	27050367	Oncotarget	IHC
Ping Zhao	30841875	BMC Cancer	WB
Wei Dong	36471393	World J Surg Oncol	WB

Storage

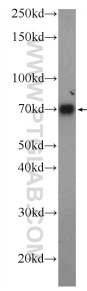
Storage:
Store at -20°C. Stable for one year after shipment.
Storage Buffer:
PBS with 0.02% sodium azide and 50% glycerol pH 7.3.
Aliquoting is unnecessary for -20°C storage

***** 20ul sizes contain 0.1% BSA**

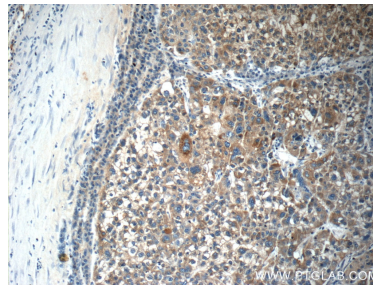
For technical support and original validation data for this product please contact:
T: 1 (888) 4PTGLAB (1-888-478-4522) (toll free in USA), or 1(312) 455-8498 (outside USA)
E: proteintech@ptglab.com
W: ptglab.com

This product is exclusively available under Proteintech Group brand and is not available to purchase from any other manufacturer.

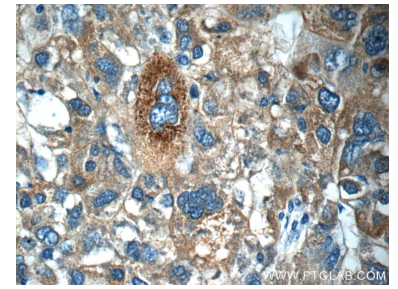
Selected Validation Data



human blood were subjected to SDS PAGE followed by western blot with 11819-1-AP (C4BPA Antibody) at dilution of 1:600 incubated at room temperature for 1.5 hours.



Immunohistochemical analysis of paraffin-embedded human liver cancer tissue slide using 11819-1-AP (C4BPA Antibody) at dilution of 1:50 (under 10x lens).



Immunohistochemical analysis of paraffin-embedded human liver cancer tissue slide using 11819-1-AP (C4BPA Antibody) at dilution of 1:50 (under 40x lens).