

For Research Use Only

ANKRD2 Polyclonal antibody, PBS Only

Catalog Number: 11821-1-PBS

Featured Product



Basic Information

Catalog Number:

11821-1-PBS

Size:

100ug, Concentration: 1 mg/ml by Nanodrop;

Source:

Rabbit

Isotype:

IgG

Immunogen Catalog Number:

AG2389

GenBank Accession Number:

BC020817

GeneID (NCBI):

26287

UNIPROT ID:

Q9GZV1

Full Name:

ankyrin repeat domain 2 (stretch responsive muscle)

Calculated MW:

37 aa, 2 kDa

Observed MW:

42 kDa

Purification Method:

Antigen affinity purification

Applications

Tested Applications:

WB, IHC, IF/ICC, IP, Indirect ELISA

Species Specificity:

human, mouse, rat

Background Information

ANKRD2 belongs to the conserved muscle ankyrin repeat protein (MARP) family. Expression of MARPs is induced in response to physiologic stress, injury, and hypertrophy. Together with Ankrd1/CARP and DARP, ANKRD2 are members of the MARP mechanosensing proteins that form a complex with titin (N2A)/calpain 3 protease/myopalladin. Ankrd2 is thought to have dual, structural and signaling roles, and could link the elastic I-band region as a stress sensor for transcriptional control in the nucleus

Storage

Storage:

Store at -80°C.

Storage Buffer:

PBS Only

For technical support and original validation data for this product please contact:

T: 1 (888) 4PTGLAB (1-888-478-4522) (toll free in USA), or 1(312) 455-8498 (outside USA)

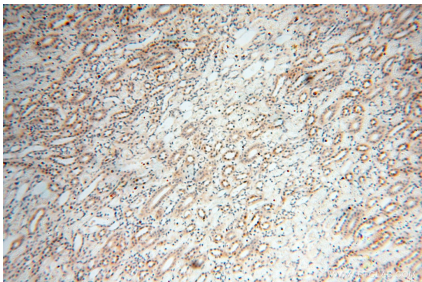
E: proteintech@ptglab.com
W: ptglab.com

This product is exclusively available under Proteintech Group brand and is not available to purchase from any other manufacturer.

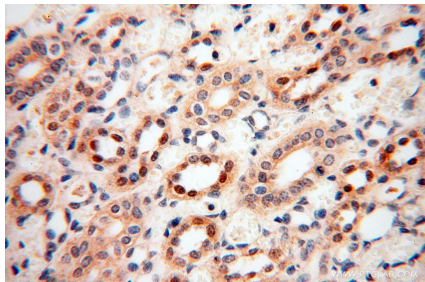
Selected Validation Data



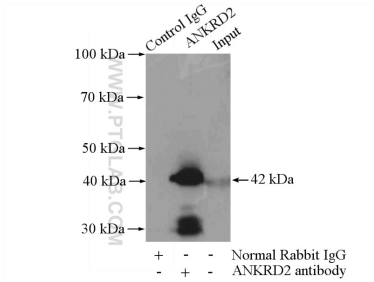
mouse skeletal muscle tissue were subjected to SDS PAGE followed by western blot with 11821-1-AP (ANKRD2 antibody) at dilution of 1:0 incubated at room temperature for 1.5 hours. This data was developed using the same antibody clone with 11821-1-PBS in a different storage buffer formulation.



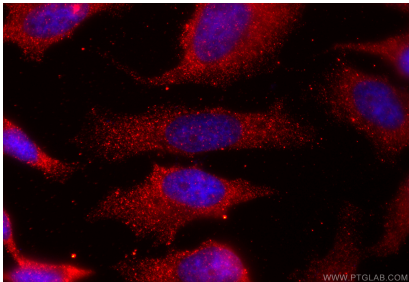
Immunohistochemical analysis of paraffin-embedded human kidney using 11821-1-AP (ANKRD2 antibody) at dilution of 1:100 (under 10x lens). This data was developed using the same antibody clone with 11821-1-PBS in a different storage buffer formulation.



Immunohistochemical analysis of paraffin-embedded human kidney using 11821-1-AP (ANKRD2 antibody) at dilution of 1:100 (under 40x lens). This data was developed using the same antibody clone with 11821-1-PBS in a different storage buffer formulation.



IP result of anti-ANKRD2 (IP:11821-1-AP, 4ug; Detection:11821-1-AP 1:500) with mouse skeletal muscle tissue lysate 3600ug. This data was developed using the same antibody clone with 11821-1-PBS in a different storage buffer formulation.



Immunofluorescent analysis of (-20°C Ethanol) fixed HeLa cells using ANKRD2 antibody (11821-1-AP) at dilution of 1:200 and Coralite®594-Conjugated Goat Anti-Rabbit IgG(H+L) (SA00013-4). This data was developed using the same antibody clone with 11821-1-PBS in a different storage buffer formulation.