

For Research Use Only

# CDC42EP2 Polyclonal antibody

Catalog Number: 11824-1-AP



## Basic Information

|  |  |  |
|--|--|--|
| <b>Catalog Number:</b><br>11824-1-AP   | <b>GenBank Accession Number:</b><br>BC022337                       | <b>Purification Method:</b><br>Antigen affinity purification |
| <b>Size:</b><br>150ul , Concentration: 300 µg/ml by Nanodrop and 233 µg/ml by Bradford method using BSA as the standard; | <b>GeneID (NCBI):</b><br>10435                                     | <b>Recommended Dilutions:</b><br>WB 1:500-1:1000             |
| <b>Source:</b><br>Rabbit   | <b>Full Name:</b><br>CDC42 effector protein (Rho GTPase binding) 2 |  |
| <b>Isotype:</b><br>IgG   | <b>Calculated MW:</b><br>22 kDa                                    |  |
| <b>Immunogen Catalog Number:</b><br>AG2392   | <b>Observed MW:</b><br>22 kDa                                      |  |

## Applications

|   |  |
|---|--|
| <b>Tested Applications:</b><br>WB, ELISA    | <b>Positive Controls:</b><br>WB : K-562 cells, mouse pancreas tissue |
| <b>Species Specificity:</b><br>human, mouse |  |

## Background Information

### Storage

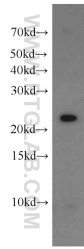
**Storage:**  
Store at -20°C. Stable for one year after shipment.  
**Storage Buffer:**  
PBS with 0.02% sodium azide and 50% glycerol pH 7.3.  
Aliquoting is unnecessary for -20°C storage

\*\*\* 20ul sizes contain 0.1% BSA

For technical support and original validation data for this product please contact:  
T: 1 (888) 4PTGLAB (1-888-478-4522) (toll free in USA), or 1(312) 455-8498 (outside USA)  
E: proteintech@ptglab.com  
W: ptglab.com

This product is exclusively available under Proteintech Group brand and is not available to purchase from any other manufacturer.

## Selected Validation Data



K-562 cells were subjected to SDS PAGE followed by western blot with 11824-1-AP (CDC42EP2 antibody) at dilution of 1:200 incubated at room temperature for 1.5 hours.