

For Research Use Only

RAG2 Polyclonal antibody, PBS Only

Catalog Number: 11825-1-PBS



Basic Information

Catalog Number: 11825-1-PBS	GenBank Accession Number: BC022397	Purification Method: Antigen affinity purification
Size: 100ug, Concentration: 1 mg/ml by Nanodrop;	GeneID (NCBI): 5897	
Source: Rabbit	UNIPROT ID: P55895	
Isotype: IgG	Full Name: recombination activating gene 2	
Immunogen Catalog Number: AG2393	Calculated MW: 527 aa, 59 kDa	
	Observed MW: 57-62 kDa	

Applications

Tested Applications:
WB, IHC, IF/ICC, IP, Indirect ELISA

Species Specificity:
human, mouse, rat

Background Information

Recombination activating gene 2 (RAG2) is core part of the RAG complex (RAG1 and RAG2), which mediates the DNA cleavage phase during V(D)J recombination. The RAG complex also plays a role in pre-B cell allelic exclusion, a process leading to expression of a single immunoglobulin heavy chain allele to enforce clonality and monospecific recognition by the B-cell antigen receptor (BCR) expressed on individual B-lymphocytes. The introduction of DNA breaks by the RAG complex on one immunoglobulin allele induces ATM-dependent repositioning of the other allele to pericentromeric heterochromatin, preventing accessibility to the RAG complex and recombination of the second allele. In the RAG complex, RAG2 is not the catalytic component but is required for all known catalytic activities mediated by RAG1. It probably acts as a sensor of chromatin state that recruits the RAG complex to H3K4me3

Storage

Storage:
Store at -80°C.

Storage Buffer:
PBS only, pH7.3

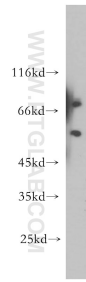
For technical support and original validation data for this product please contact:

T: 1 (888) 4PTGLAB (1-888-478-4522) (toll free in USA), or 1(312) 455-8498 (outside USA)

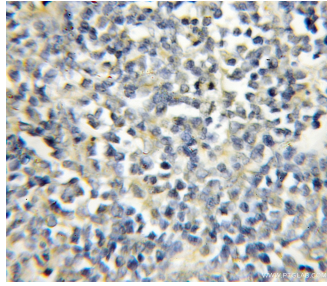
E: proteintech@ptglab.com
W: ptglab.com

This product is exclusively available under Proteintech Group brand and is not available to purchase from any other manufacturer.

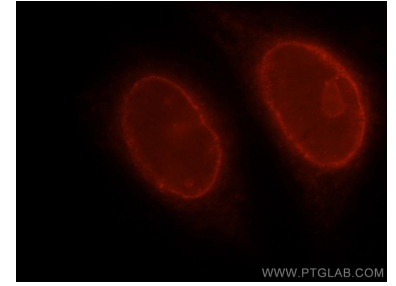
Selected Validation Data



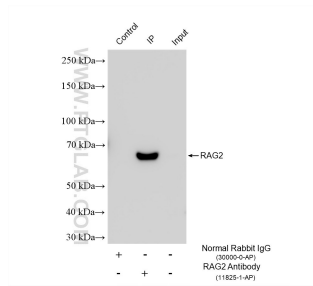
A375 cells were subjected to SDS PAGE followed by western blot with 11825-1-AP (RAG2 antibody) at dilution of 1:300 incubated at room temperature for 1.5 hours. This data was developed using the same antibody clone with 11825-1-PBS in a different storage buffer formulation.



Immunohistochemical analysis of paraffin-embedded human lymphoma using 11825-1-AP (RAG2 antibody) at dilution of 1:50 (under 10x lens). This data was developed using the same antibody clone with 11825-1-PBS in a different storage buffer formulation.



Immunofluorescent analysis of HeLa cells, using RAG2 antibody 11825-1-AP at 1:25 dilution and Rhodamine-labeled goat anti-rabbit IgG (red). This data was developed using the same antibody clone with 11825-1-PBS in a different storage buffer formulation.



IP result of anti-RAG2 (IP:11825-1-AP, 4ug; Detection:11825-1-AP 1:500) with mouse thymus tissue lysate 1000 ug. This data was developed using the same antibody clone with 11825-1-PBS in a different storage buffer formulation.