

For Research Use Only

FGL2 Polyclonal antibody

Catalog Number: 11827-1-AP

10 Publications



Basic Information

Catalog Number:

11827-1-AP

Size:

150ul, Concentration: 300 ug/ml by Nanodrop and 180 ug/ml by Bradford method using BSA as the standard;

Source:

Rabbit

Isotype:

IgG

Immunogen Catalog Number:

AG2395

GenBank Accession Number:

BC017813

GeneID (NCBI):

10875

UNIPROT ID:

Q14314

Full Name:

fibrinogen-like 2

Calculated MW:

50 kDa

Observed MW:

70 kDa, 50-60 kDa

Purification Method:

Antigen affinity purification

Recommended Dilutions:

WB 1:500-1:3000

IHC 1:20-1:200

IF/ICC 1:10-1:100

Applications

Tested Applications:

WB, IHC, IF/ICC, ELISA

Cited Applications:

WB, IHC, IF

Species Specificity:

human, mouse, rat

Cited Species:

human, mouse

Positive Controls:

WB: mouse colon tissue, human ileum tissue, mouse thymus tissue, rat thymus tissue

IHC: human colon cancer tissue,

IF/ICC: HepG2 cells,

Note-IHC: suggested antigen retrieval with *TE buffer pH 9.0*; (*) Alternatively, antigen retrieval may be performed with *citrate buffer pH 6.0*

Background Information

FGL2 (fibrinogen like protein 2) is a 70 kDa glycoprotein that belongs to the fibrinogen-related superfamily of proteins which are involved in coagulation, cell adhesion, and transendothelial migration. FGL2 is an important immune regulator of both innate and adaptive response. It is present on the surface of macrophages and endothelial cells, and can be constitutively secreted by CD4⁺ CD8⁺ T cell. FGL2 forms a tetrameric complex which is stabilized by interchain disulfide bonds and it exerts immunosuppressive effects on both T cell proliferation and dendritic cell maturation. The protein may play a role in physiologic functions at mucosal sites.

Notable Publications

Author	Pubmed ID	Journal	Application
Haijing Yu	28494352	Mol Immunol	IHC
Anan Yin	33854822	Oncoimmunology	WB
Haijing Yu	30619295	Front Immunol	IHC

Storage

Storage:

Store at -20°C. Stable for one year after shipment.

Storage Buffer:

PBS with 0.02% sodium azide and 50% glycerol pH 7.3.

Aliquoting is unnecessary for -20°C storage

***** 20ul sizes contain 0.1%BSA**

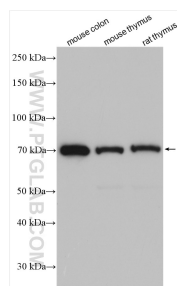
For technical support and original validation data for this product please contact:

T: 1 (888) 4PTGLAB (1-888-478-4522) (toll free in USA), or 1(312) 455-8498 (outside USA)

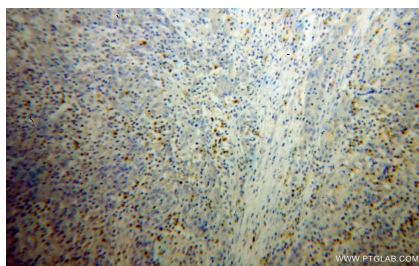
E: proteintech@ptglab.com
W: ptglab.com

This product is exclusively available under Proteintech Group brand and is not available to purchase from any other manufacturer.

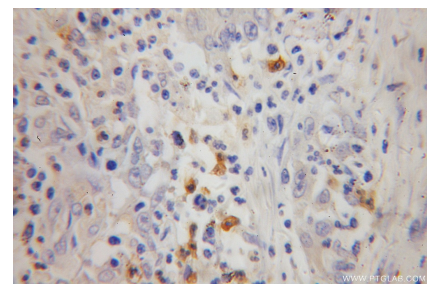
Selected Validation Data



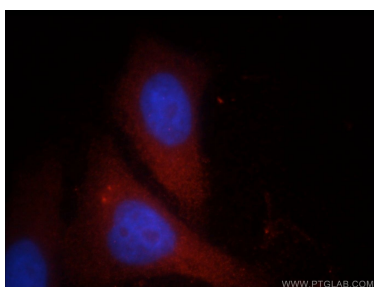
Various lysates were subjected to SDS PAGE followed by western blot with 11827-1-AP (FGL2 antibody) at dilution of 1:1500 incubated at room temperature for 1.5 hours.



Immunohistochemical analysis of paraffin-embedded human colon cancer using 11827-1-AP (FGL2 antibody) at dilution of 1:50 (under 10x lens).



Immunohistochemical analysis of paraffin-embedded human colon cancer using 11827-1-AP (FGL2 antibody) at dilution of 1:50 (under 40x lens).



Immunofluorescent analysis of HepG2 cells, using FGL2 antibody 11827-1-AP at 1:25 dilution and Rhodamine-labeled goat anti-rabbit IgG (red). Blue pseudocolor = DAPI (fluorescent DNA dye).