

For Research Use Only

# SDCCAG1 Polyclonal antibody

Catalog Number: 11840-1-AP

Featured Product

5 Publications



## Basic Information

<b>Catalog Number:</b> 11840-1-AP	<b>GenBank Accession Number:</b> BC020794	<b>Purification Method:</b> Antigen affinity purification
<b>Size:</b> 150ul , Concentration: 800 µg/ml by Nanodrop;	<b>GeneID (NCBI):</b> 9147	<b>Recommended Dilutions:</b> WB 1:1000-1:6000 IP 0.5-4.0 ug for 1.0-3.0 mg of total protein lysate IHC 1:250-1:1000
<b>Source:</b> Rabbit	<b>Full Name:</b> serologically defined colon cancer antigen 1	
<b>Isotype:</b> IgG	<b>Calculated MW:</b> 1076 aa, 123 kDa	
<b>Immunogen Catalog Number:</b> AG2467	<b>Observed MW:</b> 130-140 kDa	

## Applications

<b>Tested Applications:</b> IHC, IP, WB, ELISA	<b>Positive Controls:</b> WB : HEK-293 cells, Jurkat cells IP : A549 cells, IHC : human lung cancer tissue,
<b>Cited Applications:</b> IF, WB	
<b>Species Specificity:</b> human, mouse, rat	
<b>Cited Species:</b> human, mouse	

**Note-IHC: suggested antigen retrieval with TE buffer pH 9.0; (\*) Alternatively, antigen retrieval may be performed with citrate buffer pH 6.0**

## Background Information

SDCCAG1, also named as NEMF, is a nuclear export mediator. It can be bound to translocon-engaged 60S subunits on native ER membranes. Human SDCCAG1 has been implicated in lung cancers and it may function as a tumor suppressor gene. SDCCAG1 inactivation contributes to the transformed state of human lung cancer cells (PMID:16103875, 10575219). NEMF is also regarded as a potential biomarker for the detection of active and latent TB infections (PMID: 26818387).

## Notable Publications

Author	Pubmed ID	Journal	Application
Paige B Martin	32934225	Nat Commun	WB
Suman Rimal	34663454	Acta Neuropathol Commun	WB,IF
Anna Thrun	33909987	Mol Cell	WB

## Storage

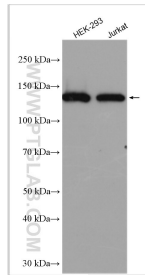
**Storage:**  
Store at -20°C. Stable for one year after shipment.  
**Storage Buffer:**  
PBS with 0.02% sodium azide and 50% glycerol pH 7.3.  
Aliquoting is unnecessary for -20°C storage

\*\*\* 20ul sizes contain 0.1% BSA

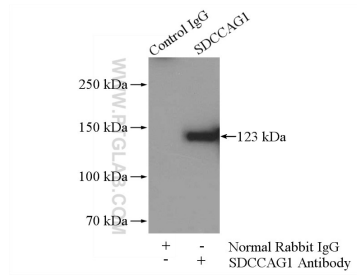
For technical support and original validation data for this product please contact:  
T: 1 (888) 4PTGLAB (1-888-478-4522) (toll free in USA), or 1(312) 455-8498 (outside USA)  
E: proteintech@ptglab.com  
W: ptglab.com

This product is exclusively available under Proteintech Group brand and is not available to purchase from any other manufacturer.

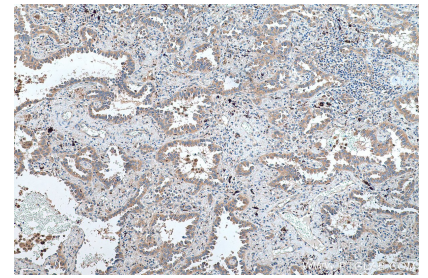
## Selected Validation Data



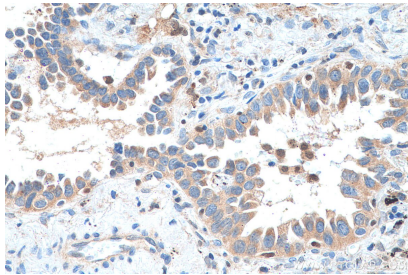
Various lysates were subjected to SDS PAGE followed by western blot with 11840-1-AP (SDCCAG1 antibody) at dilution of 1:3000 incubated at room temperature for 1.5 hours.



IP Result of anti-SDCCAG1 (IP:11840-1-AP, 4ug; Detection:11840-1-AP 1:500) with A549 cells lysate 1800ug.



Immunohistochemical analysis of paraffin-embedded human lung cancer tissue slide using 11840-1-AP (SDCCAG1 antibody) at dilution of 1:500 (under 10x lens). Heat mediated antigen retrieval with Tris-EDTA buffer (pH 9.0).



Immunohistochemical analysis of paraffin-embedded human lung cancer tissue slide using 11840-1-AP (SDCCAG1 antibody) at dilution of 1:500 (under 40x lens). Heat mediated antigen retrieval with Tris-EDTA buffer (pH 9.0).