

For Research Use Only

STBD1 Polyclonal antibody

Catalog Number: 11842-1-AP

Featured Product

13 Publications



Basic Information

Catalog Number:

11842-1-AP

Size:

150ul, Concentration: 450 µg/ml by Nanodrop;

Source:

Rabbit

Isotype:

IgG

Immunogen Catalog Number:

AG2481

GenBank Accession Number:

BC022301

GeneID (NCBI):

8987

UNIPROT ID:

O95210

Full Name:

starch binding domain 1

Calculated MW:

41 kDa

Observed MW:

35-43 kDa

Purification Method:

Antigen affinity purification

Recommended Dilutions:

WB 1:500-1:2000

IP 0.5-4.0 ug for 1.0-3.0 mg of total protein lysate

IHC 1:50-1:500

Applications

Tested Applications:

IHC, IP, WB, ELISA

Cited Applications:

IF, IHC, IP, WB

Species Specificity:

human, mouse

Cited Species:

human, chicken, rat, mouse

Note-IHC: suggested antigen retrieval with TE buffer pH 9.0; (*) Alternatively, antigen retrieval may be performed with citrate buffer pH 6.0

Positive Controls:

WB : mouse skeletal muscle tissue, HeLa cells, A549 cells

IP : A549 cells,

IHC : human colon cancer tissue,

Background Information

STBD1 may have the capability to bind to carbohydrates. It functions as a glycogen receptor that tethers glycogen to autophagic membranes for delivery and breakdown in lysosomes. STBD1 appears molecular mass of 35-38 kDa band in mouse/rat tissues and 38-43 kDa in human tissue.

Notable Publications

Author	Pubmed ID	Journal	Application
Andria A. Lytridou	34005315	J Cell Sci	WB,IF
Fan Qiu	34522006	Acta Pharmacol Sin	WB
Andria A Lytridou	32958708	J Cell Sci	WB,IF

Storage

Storage:

Store at -20°C. Stable for one year after shipment.

Storage Buffer:

PBS with 0.02% sodium azide and 50% glycerol pH 7.3.

Aliquoting is unnecessary for -20°C storage

*** 20ul sizes contain 0.1% BSA

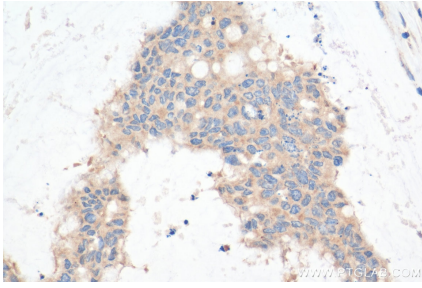
For technical support and original validation data for this product please contact:

T: 1 (888) 4PTGLAB (1-888-478-4522) (toll free in USA), or 1(312) 455-8498 (outside USA)

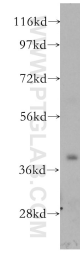
E: proteintech@ptglab.com
W: ptglab.com

This product is exclusively available under Proteintech Group brand and is not available to purchase from any other manufacturer.

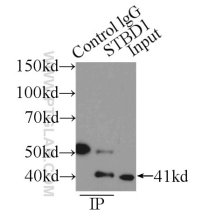
Selected Validation Data



Immunohistochemical analysis of paraffin-embedded human colon cancer tissue slide using 11842-1-AP (STBD1 antibody) at dilution of 1:200 (under 40x lens). Heat mediated antigen retrieval with Tris-EDTA buffer (pH 9.0).



mouse skeletal muscle tissue were subjected to SDS PAGE followed by western blot with 11842-1-AP (STBD1 antibody) at dilution of 1:1000 incubated at room temperature for 1.5 hours.



IP result of anti-STBD1 (IP:11842-1-AP, 4ug; Detection:11842-1-AP 1:1000) with A549 cells lysate 1600ug.