

UBE2E2 Polyclonal antibody

Catalog Number: 11844-1-AP

Featured Product

4 Publications

Basic Information

Catalog Number: 11844-1-AP	GenBank Accession Number: BC022332	Purification Method: Antigen affinity purification
Size: 150ul , Concentration: 800 µg/ml by Nanodrop and 227 µg/ml by Bradford method using BSA as the standard;	GeneID (NCBI): 7325	Recommended Dilutions: WB 1:500-1:1000 IHC 1:20-1:200 IF 1:10-1:100
Source: Rabbit	Full Name: ubiquitin-conjugating enzyme E2E 2 (UBC4/5 homolog, yeast)	
Isotype: IgG	Calculated MW: 201 aa, 22 kDa	
Immunogen Catalog Number: AG2509	Observed MW: 22 kDa	

Applications

Tested Applications: IF, IHC, WB, ELISA	Positive Controls:
Cited Applications: IHC, WB	WB : human thyroid gland tissue, human brain tissue, mouse embryo tissue
Species Specificity: human, mouse, rat	IHC : human gliomas tissue,
Cited Species: human	IF : HepG2 cells,

Note-IHC: suggested antigen retrieval with TE buffer pH 9.0; (*) Alternatively, antigen retrieval may be performed with citrate buffer pH 6.0

Background Information

UBE2E2(ubiquitin-conjugating enzyme E2 E2) is also named as UBC8 and belongs to the ubiquitin-conjugating enzyme family. This gene encodes a 22 kDa protein that functions as a major ISG15 E2 enzyme raises the possibility that ISG15 conjugation might use Ubc8-competent Ub E3 enzymes and also function as an E2 for several Ub E3 enzymes, including both HECT E3s and RING E3s(PMID: 15131269).

Notable Publications

Author	Pubmed ID	Journal	Application
Mei-Juan Zhou	28035359	Int J Mol Med	WB
Kate E Coleman	26272819	Genes Dev	WB
Xiaoling Hong	36765041	Cell Death Dis	WB, IHC

Storage

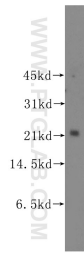
Storage:
Store at -20°C. Stable for one year after shipment.
Storage Buffer:
PBS with 0.02% sodium azide and 50% glycerol pH 7.3.
Aliquoting is unnecessary for -20°C storage

*** 20ul sizes contain 0.1% BSA

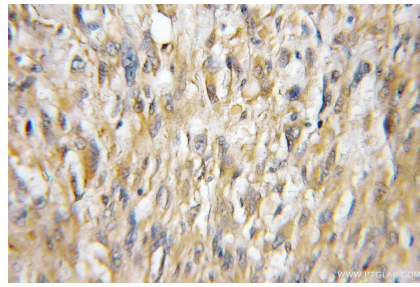
For technical support and original validation data for this product please contact:
T: 1 (888) 4PTGLAB (1-888-478-4522) (toll free in USA), or 1(312) 455-8498 (outside USA)
E: proteintech@ptglab.com
W: ptglab.com

This product is exclusively available under Proteintech Group brand and is not available to purchase from any other manufacturer.

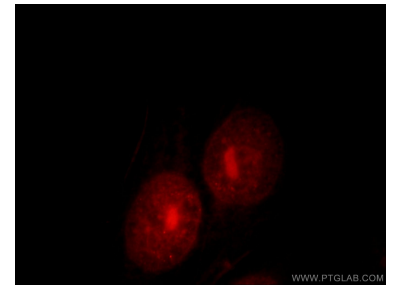
Selected Validation Data



human thyroid gland tissue were subjected to SDS PAGE followed by western blot with 11844-1-AP (UBE2E2 antibody) at dilution of 1:300 incubated at room temperature for 1.5 hours.



Immunohistochemical analysis of paraffin-embedded human gliomas using 11844-1-AP (UBE2E2 antibody) at dilution of 1:50 (under 10x lens).



Immunofluorescent analysis of HepG2 cells, using UBE2E2 antibody 11844-1-AP at 1:25 dilution and Rhodamine-labeled goat anti-rabbit IgG (red).