

For Research Use Only

SPCS1 Polyclonal antibody

Catalog Number: 11847-1-AP

Featured Product

3 Publications



Basic Information

| | | |
|--|--|---|
| Catalog Number: 11847-1-AP | GenBank Accession Number: BC000884 | Purification Method: Antigen affinity purification |
| Size: 150ul , Concentration: 550 µg/ml by Nanodrop and 533 µg/ml by Bradford method using BSA as the standard; | GeneID (NCBI): 28972 | Recommended Dilutions: WB 1:500-1:1000 IF 1:10-1:100 |
| Source: Rabbit | Full Name: signal peptidase complex subunit 1 homolog (<i>S. cerevisiae</i>) | |
| Isotype: IgG | Calculated MW: 102 aa, 12 kDa | |
| Immunogen Catalog Number: AG2407 | Observed MW: 12 kDa | |

Applications

| | |
|--|---|
| Tested Applications: IF, WB, ELISA | Positive Controls: WB : HeLa cells, human skin tissue, PC-3 cells IF : BxPC-3 cells, |
| Cited Applications: WB | |
| Species Specificity: human | |
| Cited Species: human | |

Background Information

Notable Publications

| Author | Pubmed ID | Journal | Application |
|------------------|-----------|-------------|-------------|
| Rong Zhang | 27383988 | Nature | WB |
| Nabeel Alzahrani | 35130329 | PLoS Pathog | WB |
| Suzuki Ryosuke R | 24009510 | PLoS Pathog | WB |

Storage

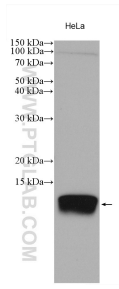
Storage:
Store at -20°C. Stable for one year after shipment.
Storage Buffer:
PBS with 0.02% sodium azide and 50% glycerol pH 7.3.
Aliquoting is unnecessary for -20°C storage

*** 20ul sizes contain 0.1% BSA

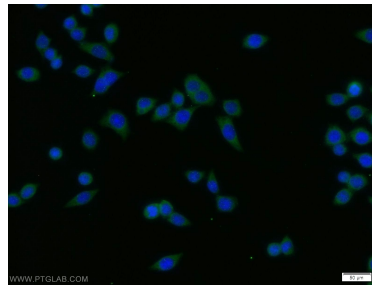
For technical support and original validation data for this product please contact:
T: 1 (888) 4PTGLAB (1-888-478-4522) (toll free in USA), or 1(312) 455-8498 (outside USA)
E: proteintech@ptglab.com
W: ptglab.com

This product is exclusively available under Proteintech Group brand and is not available to purchase from any other manufacturer.

Selected Validation Data



HeLa cells were subjected to SDS PAGE followed by western blot with 11847-1-AP (SPCS1 antibody) at dilution of 1:500 incubated at room temperature for 1.5 hours.



Immunofluorescent analysis of BxPC-3 cells using 11847-1-AP (SPCS1 antibody) at dilution of 1:25 and Alexa Fluor 488-conjugated AffiniPure Goat Anti-Rabbit IgG(H+L).