

For Research Use Only

Cofilin 2 Polyclonal antibody

Catalog Number: 11848-1-AP

2 Publications



Basic Information

Catalog Number:

11848-1-AP

Size:

150ul, Concentration: 300 ug/ml by Nanodrop and 147 ug/ml by Bradford method using BSA as the standard;

Source:

Rabbit

Isotype:

IgG

Immunogen Catalog Number:

AG2408

GenBank Accession Number:

BC022876

GeneID (NCBI):

1073

UNIPROT ID:

Q9Y281

Full Name:

cofilin 2 (muscle)

Calculated MW:

166 aa, 19 kDa

Observed MW:

19 kDa

Purification Method:

Antigen affinity purification

Recommended Dilutions:

WB 1:500-1:2000

IHC 1:50-1:500

IF/ICC 1:200-1:800

Applications

Tested Applications:

WB, IHC, IF/ICC, ELISA

Cited Applications:

WB, IHC, IF

Species Specificity:

human, mouse, rat

Cited Species:

human, mouse

Note-IHC: suggested antigen retrieval with TE buffer pH 9.0; (*) Alternatively, antigen retrieval may be performed with citrate buffer pH 6.0

Positive Controls:

WB : human liver tissue, L02 cells, mouse liver tissue, mouse lung tissue, mouse skeletal muscle tissue

IHC : human normal colon, human gliomas tissue, human heart tissue, human skeletal muscle tissue

IF/ICC : L02 cells,

Notable Publications

Author	Pubmed ID	Journal	Application
Lara Ottaviani	35278675	Mol Ther	WB
Haoyuan Xu	39351449	Noncoding RNA Res	WB,IHC,IF

Storage

Storage:

Store at -20°C. Stable for one year after shipment.

Storage Buffer:

PBS with 0.02% sodium azide and 50% glycerol pH 7.3.

Aliquoting is unnecessary for -20°C storage

*** 20ul sizes contain 0.1% BSA

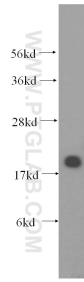
For technical support and original validation data for this product please contact:

T: 1 (888) 4PTGLAB (1-888-478-4522) (toll free in USA), or 1(312) 455-8498 (outside USA)

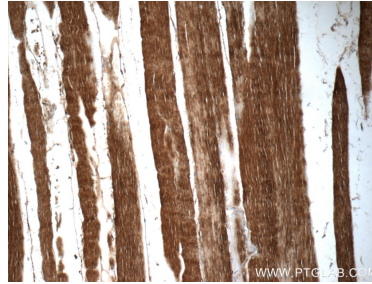
E: proteintech@ptglab.com
W: ptglab.com

This product is exclusively available under Proteintech Group brand and is not available to purchase from any other manufacturer.

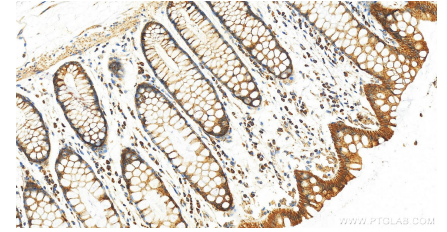
Selected Validation Data



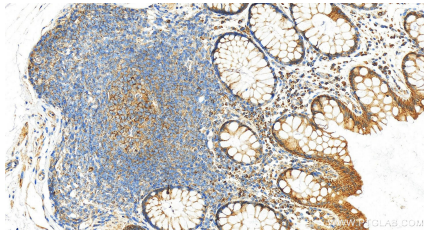
human liver tissue were subjected to SDS PAGE followed by western blot with 11848-1-AP (Cofilin 2 antibody) at dilution of 1:400 incubated at room temperature for 1.5 hours.



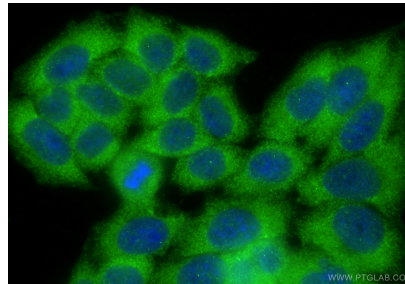
Immunohistochemical analysis of paraffin-embedded human skeletal muscle tissue slide using 11848-1-AP (Cofilin 2 antibody at dilution of 1:50 (under 10x lens).



Immunohistochemical analysis of paraffin-embedded human normal colon slide using 11848-1-AP (Cofilin 2 antibody) at dilution of 1:200 (under 20x lens). Heat mediated antigen retrieval with Tris-EDTA buffer (pH 9.0).



Immunohistochemical analysis of paraffin-embedded human normal colon slide using 11848-1-AP (Cofilin 2 antibody) at dilution of 1:200 (under 20x lens). Heat mediated antigen retrieval with Tris-EDTA buffer (pH 9.0).



Immunofluorescent analysis of (-20°C Ethanol) fixed L02 cells using Cofilin 2 antibody (11848-1-AP) at dilution of 1:400 and CoraLite®488-Conjugated Goat Anti-Rabbit IgG(H+L) (SA00013-2).