

For Research Use Only

SERPINA10 Polyclonal antibody

Catalog Number: 11851-1-AP



Basic Information

Catalog Number:

11851-1-AP

Size:

150ul , Concentration: 350 ug/ml by Nanodrop and 247 ug/ml by Bradford method using BSA as the standard;

Source:

Rabbit

Isotype:

IgG

Immunogen Catalog Number:

AG2420

GenBank Accession Number:

BC022261

GeneID (NCBI):

51156

UNIPROT ID:

Q9UK55

Full Name:

serpin peptidase inhibitor, clade A (alpha-1 antiproteinase, antitrypsin), member 10

Calculated MW:

444 aa, 51 kDa

Observed MW:

72 kDa, 68 kDa, 50-55 kDa

Purification Method:

Antigen affinity purification

Recommended Dilutions:

WB 1:500-1:3000

IP 0.5-4.0 ug for 1.0-3.0 mg of total protein lysate

IHC 1:20-1:200

IF/ICC 1:20-1:200

Applications

Tested Applications:

WB, IHC, IF/ICC, IP, ELISA

Species Specificity:

human, mouse, rat

Note-IHC: suggested antigen retrieval with TE buffer pH 9.0; (*) Alternatively, antigen retrieval may be performed with citrate buffer pH 6.0

Positive Controls:

WB : human liver tissue, HepG2 cells, L02 cells, mouse liver tissue, RAW264.7

IP : L02 cells,

IHC : human liver tissue, mouse liver tissue

IF/ICC : L02 cells, HepG2 cells

Storage

Storage:

Store at -20°C. Stable for one year after shipment.

Storage Buffer:

PBS with 0.02% sodium azide and 50% glycerol pH 7.3.

Aliquoting is unnecessary for -20°C storage

*** 20ul sizes contain 0.1% BSA

For technical support and original validation data for this product please contact:

T: 1 (888) 4PTGLAB (1-888-478-4522) (toll free in USA), or 1(312) 455-8498 (outside USA)

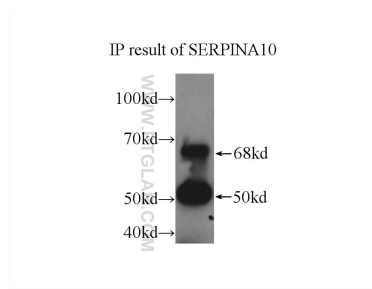
E: proteintech@ptglab.com
W: ptglab.com

This product is exclusively available under Proteintech Group brand and is not available to purchase from any other manufacturer.

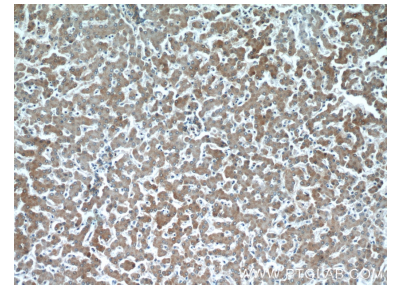
Selected Validation Data



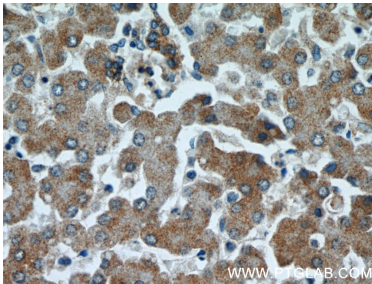
human liver tissue were subjected to SDS PAGE followed by western blot with 11851-1-AP (SERPINA10 antibody) at dilution of 1:500 incubated at room temperature for 1.5 hours.



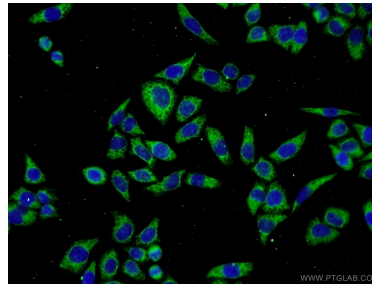
IP result of anti-SERPINA10 (IP:11851-1-AP, 3ug; Detection:11851-1-AP 1:1000) with L02 cells lysate 2500ug.



Immunohistochemical analysis of paraffin-embedded human liver using 11851-1-AP (SERPINA10 antibody) at dilution of 1:100 (under 10x lens).



Immunohistochemical analysis of paraffin-embedded human liver using 11851-1-AP (SERPINA10 antibody) at dilution of 1:100 (under 40x lens).



Immunofluorescent analysis of L02 cells using 11851-1-AP (SERPINA10 antibody) at dilution of 1:50 and Alexa Fluor 488-conjugated Goat Anti-Rabbit IgG(H+L).