

For Research Use Only

Caspase 4/P20/P10 Polyclonal antibody

Catalog Number: 11856-1-AP

Featured Product

15 Publications



Basic Information

Catalog Number:

11856-1-AP

Size:

150ul, Concentration: 900 ug/ml by Nanodrop and 450 ug/ml by Bradford method using BSA as the standard;

Source:

Rabbit

Isotype:

IgG

Immunogen Catalog Number:

AG2429

GenBank Accession Number:

BC017839

GeneID (NCBI):

837

UNIPROT ID:

P49662

Full Name:

caspase 4, apoptosis-related cysteine peptidase

Calculated MW:

377 aa, 43 kDa

Observed MW:

43-48 kDa

Purification Method:

Antigen affinity purification

Recommended Dilutions:

WB 1:500-1:1000

IHC 1:20-1:200

IF/ICC 1:200-1:800

Applications

Tested Applications:

WB, IHC, IF/ICC, ELISA

Cited Applications:

WB, IHC, IF

Species Specificity:

human

Cited Species:

human, rat

Note-IHC: suggested antigen retrieval with TE buffer pH 9.0; (*) Alternatively, antigen retrieval may be performed with citrate buffer pH 6.0

Positive Controls:

WB : SGC-7901 cells, THP-1 cells

IHC : human pancreas cancer tissue,

IF/ICC : HepG2 cells,

Background Information

Caspase 4 (CASP4), is a member of the cysteine-aspartic acid protease (caspase) family. Sequential activation of caspases plays a central role in the execution-phase of cell apoptosis. Caspase 4 is able to cleave and activate its own precursor protein, as well as caspase 1 precursor. Overexpression of caspase 4 will induce cell apoptosis.

Notable Publications

Author	Pubmed ID	Journal	Application
Liangmin Fu	36248876	Front Immunol	IHC, WB
Xiao-Lei Xin	31542790	Med Sci Monit	WB
Qingshan Ji	33118609	Inflammation	WB

Storage

Storage:

Store at -20°C. Stable for one year after shipment.

Storage Buffer:

PBS with 0.02% sodium azide and 50% glycerol pH 7.3.

Aliquoting is unnecessary for -20°C storage

*** 20ul sizes contain 0.1% BSA

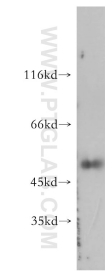
For technical support and original validation data for this product please contact:

T: 1 (888) 4PTGLAB (1-888-478-4522) (toll free in USA), or 1(312) 455-8498 (outside USA)

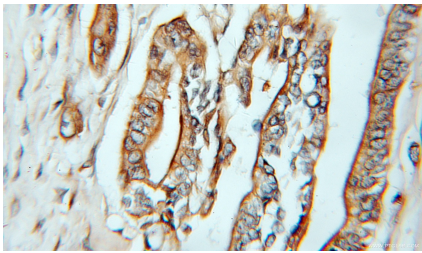
E: proteintech@ptglab.com
W: ptglab.com

This product is exclusively available under Proteintech Group brand and is not available to purchase from any other manufacturer.

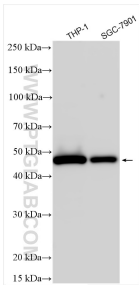
Selected Validation Data



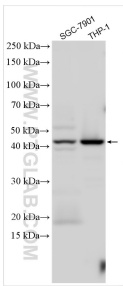
SGC-7901 cells were subjected to SDS PAGE followed by western blot with 11856-1-AP (Caspase 4/P20/P10 antibody) at dilution of 1:300 incubated at room temperature for 1.5 hours.



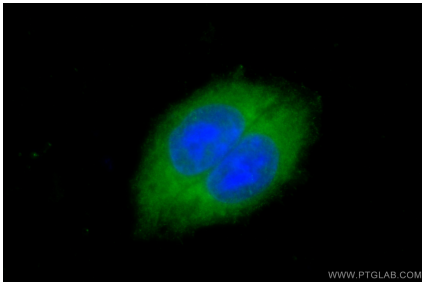
Immunohistochemical analysis of paraffin-embedded human pancreas cancer using 11856-1-AP (Caspase 4/P20/P10 antibody) at dilution of 1:50 (under 25x lens).



Various lysates were subjected to SDS PAGE followed by western blot with 11856-1-AP (Caspase 4/P20/P10 antibody) at dilution of 1:1000 incubated at room temperature for 1.5 hours.



SGC-7901 cells were subjected to SDS PAGE followed by western blot with 11856-1-AP (Caspase 4/P20/P10 antibody) at dilution of 1:1000 incubated at room temperature for 1.5 hours.



Immunofluorescent analysis of (-20°C Ethanol) fixed HepG2 cells using Caspase 4/P20/P10 antibody (11856-1-AP) at dilution of 1:400 and CoraLite® 488-Conjugated AffiniPure Goat Anti-Rabbit IgG(H+L) (SA00013-2).