

For Research Use Only

DLEU1 Polyclonal antibody

Catalog Number: 11860-1-AP

Featured Product

1 Publications



Basic Information

Catalog Number:

11860-1-AP

Size:

150ul, Concentration: 140 ug/ml by Nanodrop and 133 ug/ml by Bradford method using BSA as the standard;

Source:

Rabbit

Isotype:

IgG

Immunogen Catalog Number:

AG2435

GenBank Accession Number:

BC020692

GeneID (NCBI):

10301

UNIPROT ID:

O43261

Full Name:

deleted in lymphocytic leukemia 1 (non-protein coding)

Calculated MW:

78 aa, 9 kDa

Observed MW:

27-30 kDa

Purification Method:

Antigen affinity purification

Recommended Dilutions:

WB 1:500-1:1000

IHC 1:50-1:500

Applications

Tested Applications:

WB, IHC, ELISA

Cited Applications:

WB

Species Specificity:

human

Cited Species:

human

Note-IHC: suggested antigen retrieval with TE buffer pH 9.0; (*) Alternatively, antigen retrieval may be performed with citrate buffer pH 6.0

Positive Controls:

WB : K-562 cells, A549 cells

IHC : human colon cancer tissue, human lung cancer tissue

Notable Publications

Author	Pubmed ID	Journal	Application
Sanghoon Lee	28427156	Oncotarget	WB

Storage

Storage:

Store at -20°C. Stable for one year after shipment.

Storage Buffer:

PBS with 0.02% sodium azide and 50% glycerol pH 7.3.

Aliquoting is unnecessary for -20°C storage

*** 20ul sizes contain 0.1% BSA

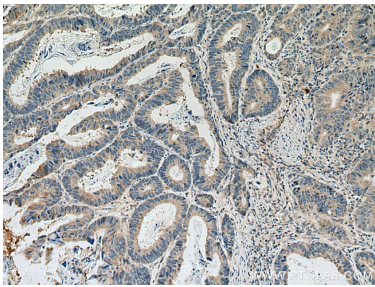
For technical support and original validation data for this product please contact:

T: 1 (888) 4PTGLAB (1-888-478-4522) (toll free in USA), or 1(312) 455-8498 (outside USA)

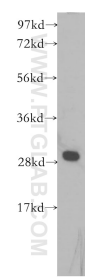
E: proteintech@ptglab.com
W: ptglab.com

This product is exclusively available under Proteintech Group brand and is not available to purchase from any other manufacturer.

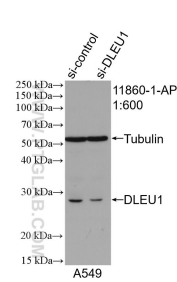
Selected Validation Data



Immunohistochemical analysis of paraffin-embedded human colon cancer tissue slide using 11860-1-AP (DLEU1 antibody) at dilution of 1:200 (under 10x lens). Heat mediated antigen retrieval with Tris-EDTA buffer (pH 9.0).



K-562 cells were subjected to SDS PAGE followed by western blot with 11860-1-AP (DLEU1 antibody) at dilution of 1:500 incubated at room temperature for 1.5 hours.



WB result of DLEU1 antibody (11860-1-AP; 1:600; incubated at room temperature for 1.5 hours) with sh-Control and sh-DLEU1 transfected A549 cells.