

For Research Use Only

SH2D1B Polyclonal antibody

Catalog Number: 11871-1-AP **7 Publications**



Basic Information

Catalog Number: 11871-1-AP	GenBank Accession Number: BC022407	Purification Method: Antigen affinity purification
Size: 150ul , Concentration: 400 µg/ml by Nanodrop and 367 µg/ml by Bradford method using BSA as the standard;	GeneID (NCBI): 117157	Recommended Dilutions: IHC 1:50-1:500 IF 1:50-1:500
Source: Rabbit	Full Name: SH2 domain containing 1B	
Isotype: IgG	Calculated MW: 132 aa, 15 kDa	
Immunogen Catalog Number: AG2454	Observed MW: 15 kDa	

Applications

Tested Applications: FC, IF, IHC, ELISA	Positive Controls: IHC : human kidney tissue, IF : HepG2 cells,
Cited Applications: CoIP, FC	
Species Specificity: human, mouse, rat	
Cited Species: human	

Note-IHC: suggested antigen retrieval with TE buffer pH 9.0; (*) Alternatively, antigen retrieval may be performed with citrate buffer pH 6.0

Background Information

SH2D1B, also named as EAT2, an adaptor expressed in innate immune cells, including natural killer (NK) cells. It plays a role in controlling signal transduction through at least four receptors, CD84, SLAMF1, LY9 and CD244, expressed on the surface of professional antigen-presenting cells. EAT-2 overexpression would enhance the innate immune responses and also result in more potent Carcinoembryonic antigen-specific adaptive immune responses.

Notable Publications

Author	Pubmed ID	Journal	Application
Lihi Radomir	28904129	J Immunol	FC, CoIP
Ivayla E Gyurova	31824507	Front Immunol	FC
Jaewon Lee	25786175	Immunity	FC

Storage

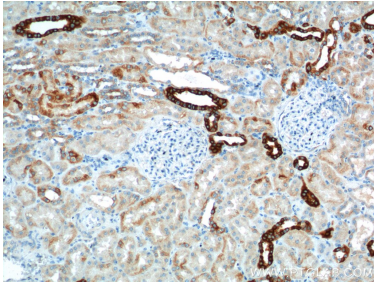
Storage:
Store at -20°C. Stable for one year after shipment.
Storage Buffer:
PBS with 0.02% sodium azide and 50% glycerol pH 7.3.
Aliquoting is unnecessary for -20°C storage

***** 20ul sizes contain 0.1% BSA**

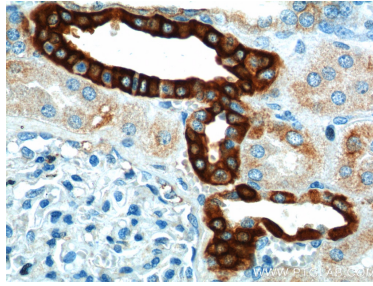
For technical support and original validation data for this product please contact:
T: 1 (888) 4PTGLAB (1-888-478-4522) (toll free in USA), or 1(312) 455-8498 (outside USA)
E: proteintech@ptglab.com
W: ptglab.com

This product is exclusively available under Proteintech Group brand and is not available to purchase from any other manufacturer.

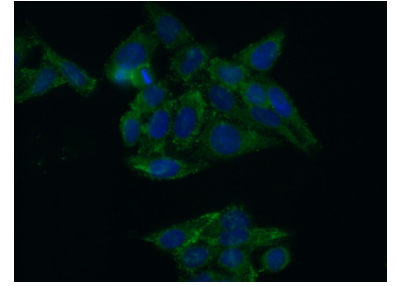
Selected Validation Data



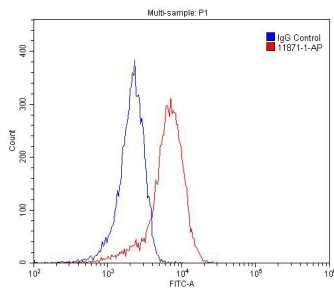
Immunohistochemical analysis of paraffin-embedded human kidney tissue slide using 11871-1-AP (SH2D1B Antibody) at dilution of 1:200 (under 10x lens).



Immunohistochemical analysis of paraffin-embedded human kidney tissue slide using 11871-1-AP (SH2D1B Antibody) at dilution of 1:200 (under 40x lens).



Immunofluorescent analysis of (-20°C Ethanol) fixed HepG2 cells using 11871-1-AP (SH2D1B antibody) at dilution of 1:50 and Alexa Fluor 488-conjugated AffiniPure Goat Anti-Rabbit IgG(H+L).



1X10⁶ Jurkat cells were stained with 0.2ug SH2D1B antibody (11871-1-AP, red) and control antibody (blue). Alexa Fluor 488-conjugated AffiniPure Goat Anti-Rabbit IgG(H+L) with dilution 1:1500. Cells were fixed with 4% PFA and permeabilized with 0.1% Triton X-100.