

For Research Use Only

# KLF10 Polyclonal antibody

Catalog Number: 11881-1-AP

5 Publications



## Basic Information

### Catalog Number:

11881-1-AP

### Size:

150ul, Concentration: 200 µg/ml by Nanodrop and 133 µg/ml by Bradford method using BSA as the standard;

### Source:

Rabbit

### Isotype:

IgG

### Immunogen Catalog Number:

AG2482

### GenBank Accession Number:

BC011538

### GeneID (NCBI):

7071

### UNIPROT ID:

Q13118

### Full Name:

Kruppel-like factor 10

### Calculated MW:

469 aa, 51 kDa

### Observed MW:

51 kDa

### Purification Method:

Antigen affinity purification

### Recommended Dilutions:

WB 1:200-1:1000

IP 0.5-4.0 ug for 1.0-3.0 mg of total protein lysate

IF/ICC 1:20-1:200

## Applications

### Tested Applications:

WB, IP, IF, ELISA

### Cited Applications:

WB, IF, IHC, Chip

### Species Specificity:

human

### Cited Species:

human, mouse, canine

### Positive Controls:

WB : HeLa cells, Jurkat cells

IP : Jurkat cells,

IF/ICC : HeLa cells,

## Background Information

KLF10 (Kruppel-like factor 10), also known as TIEG1, is a transcription factor that plays a role in the regulation of cell growth. It binds to the consensus sequence 5'-GGTGTG-3'. KLF10 plays a role in the response to TGFbeta (through the TGFbeta/Smad signalling pathway) and estrogen. In both cases, KLF10 induces or repressed gene transcription to enhance the TGFbeta/Smad signalling pathway, as well as other pathways, to regulate cell proliferation, differentiation and apoptosis. KLF10 has been shown to have a role in skeletal disease (osteopenia/osteoporosis), hypertrophic cardiomyopathy, and breast and prostate cancer. This antibody is a rabbit polyclonal antibody raised against a full-length human KLF10 protein, and specifically recognizes the 52kd KLF10 protein.

## Notable Publications

Author	Pubmed ID	Journal	Application
Yongyun Li	34536440	J Mol Cell Cardiol	IF
Xiaoyin Ma	26984531	Sci Rep	Chip
Langlang Zheng	32156482	Acta Histochem	WB,IHC

## Storage

### Storage:

Store at -20°C. Stable for one year after shipment.

### Storage Buffer:

PBS with 0.02% sodium azide and 50% glycerol pH 7.3.

Aliquoting is unnecessary for -20°C storage

\*\*\* 20ul sizes contain 0.1% BSA

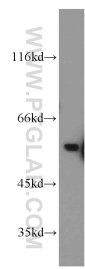
For technical support and original validation data for this product please contact:

T: 1 (888) 4PTGLAB (1-888-478-4522) (toll free in USA), or 1(312) 455-8498 (outside USA)

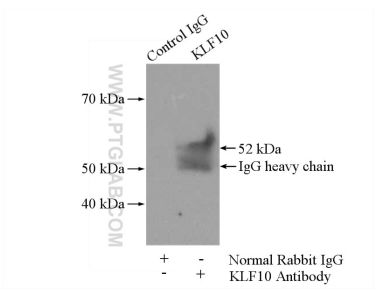
E: [proteintech@ptglab.com](mailto:proteintech@ptglab.com)  
W: [ptglab.com](http://ptglab.com)

This product is exclusively available under Proteintech Group brand and is not available to purchase from any other manufacturer.

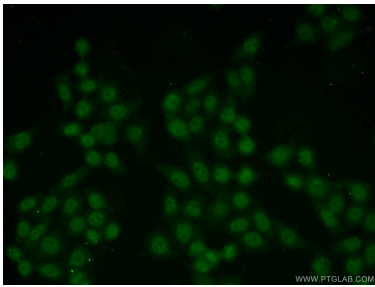
Selected Validation Data



HeLa cells were subjected to SDS PAGE followed by western blot with 11881-1-AP (KLF10 antibody) at dilution of 1:100 incubated at room temperature for 1.5 hours.



IP result of anti-KLF10 (IP:11881-1-AP, 4ug; Detection:11881-1-AP 1:300) with Jurkat cells lysate 2800ug.



Immunofluorescent analysis of HeLa cells using 11881-1-AP (KLF10 antibody) at dilution of 1:50 and Alexa Fluor 488-conjugated AffiniPure Goat Anti-Rabbit IgG(H+L).