

For Research Use Only

RBBP6 Polyclonal antibody

Catalog Number: 11882-1-AP

Featured Product

1 Publications



Basic Information

Catalog Number: 11882-1-AP	GenBank Accession Number: BC029352	Purification Method: Antigen affinity purification
Size: 150ul, Concentration: 500 µg/ml by Nanodrop;	GeneID (NCBI): 5930	Recommended Dilutions: WB 1:1000-1:6000
Source: Rabbit	Full Name: retinoblastoma binding protein 6	
Isotype: IgG	Calculated MW: 1792 aa, 200 kDa	
Immunogen Catalog Number: AG2484	Observed MW: 250 kDa	

Applications

Tested Applications: WB, ELISA	Positive Controls: WB: Jurkat cells, HEK-293 cells, MCF-7 cells
Cited Applications: WB	
Species Specificity: human, mouse	
Cited Species: human	

Background Information

RBBP6 (retinoblastoma binding protein 6) is a multifunctional protein that interacts with both p53 and pRb and has been implicated in mRNA processing. It has also been identified as a putative E3 ubiquitin ligase due to the presence of a RING finger domain [PMID:18851979]. RBBP6 contains an N-terminal ubiquitin-like domain and a cysteine-rich RING finger-like domain, through which it promotes the ubiquitination of p53 by Hdm2 in an E4-like manner [PMID:17470788]. It is implicated in a diverse set of cellular functions, including mRNA metabolism, regulation of the cell cycle, tumorigenesis, and development [PMID:12938151,17470788].

Notable Publications

Author	Pubmed ID	Journal	Application
Christopher Noyes	36653474	Commun Biol	WB

Storage

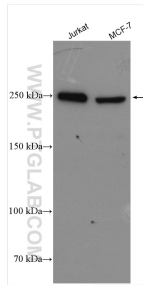
Storage:
Store at -20°C. Stable for one year after shipment.
Storage Buffer:
PBS with 0.02% sodium azide and 50% glycerol pH 7.3.
Aliquoting is unnecessary for -20°C storage

*** 20ul sizes contain 0.1% BSA

For technical support and original validation data for this product please contact:
T: 1 (888) 4PTGLAB (1-888-478-4522) (toll free in USA), or 1(312) 455-8498 (outside USA)
E: proteintech@ptglab.com
W: ptglab.com

This product is exclusively available under Proteintech Group brand and is not available to purchase from any other manufacturer.

Selected Validation Data



Various lysates were subjected to SDS PAGE followed by western blot with 11882-1-AP (RBBP6 antibody) at dilution of 1:3000 incubated at room temperature for 1.5 hours.