

For Research Use Only

SLC4A4 Polyclonal antibody

Catalog Number: 11885-1-AP

Featured Product

25 Publications



Basic Information

Catalog Number:

11885-1-AP

Size:

150ul, Concentration: 550 ug/ml by Nanodrop and 320 ug/ml by Bradford method using BSA as the standard;

Source:

Rabbit

Isotype:

IgG

Immunogen Catalog Number:

AG2490

GenBank Accession Number:

BC030977

GeneID (NCBI):

8671

UNIPROT ID:

Q9Y6R1

Full Name:

solute carrier family 4, sodium bicarbonate cotransporter, member 4

Calculated MW:

121 kDa

Observed MW:

121 kDa

Purification Method:

Antigen affinity purification

Recommended Dilutions:

WB 1:500-1:1000

IP 0.5-4.0 ug for 1.0-3.0 mg of total protein lysate

IHC 1:200-1:800

IF/ICC 1:10-1:100

Applications

Tested Applications:

WB, IHC, IF/ICC, IP, ELISA

Cited Applications:

WB, IHC, IF

Species Specificity:

human, mouse, rat

Cited Species:

human, mouse, rat

Note-IHC: suggested antigen retrieval with TE buffer pH 9.0; (*) Alternatively, antigen retrieval may be performed with citrate buffer pH 6.0

Positive Controls:

WB : HEK-293 cells, mouse kidney tissue

IP : HEK-293 cells,

IHC : human kidney tissue, mouse small intestine tissue

IF/ICC : HepG2 cells,

Notable Publications

Author	Pubmed ID	Journal	Application
Maria-Gabriela Colmenares Aguilar	33112159	Am J Physiol Gastrointest Liver Physiol	IHC
Autumn N Harris	34605272	Am J Physiol Renal Physiol	WB
Samuel Shin	36433745	Clin Exp Pharmacol Physiol	WB

Storage

Storage:

Store at -20°C. Stable for one year after shipment.

Storage Buffer:

PBS with 0.02% sodium azide and 50% glycerol pH 7.3.

Aliquoting is unnecessary for -20°C storage

*** 20ul sizes contain 0.1% BSA

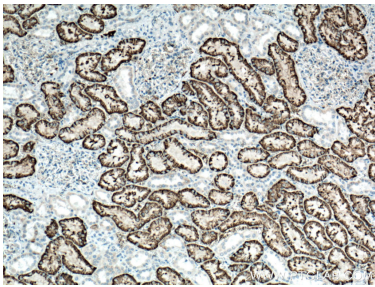
For technical support and original validation data for this product please contact:

T: 1 (888) 4PTGLAB (1-888-478-4522) (toll free in USA), or 1(312) 455-8498 (outside USA)

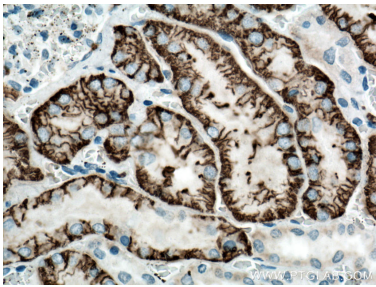
E: proteintech@ptglab.com
W: ptglab.com

This product is exclusively available under Proteintech Group brand and is not available to purchase from any other manufacturer.

Selected Validation Data



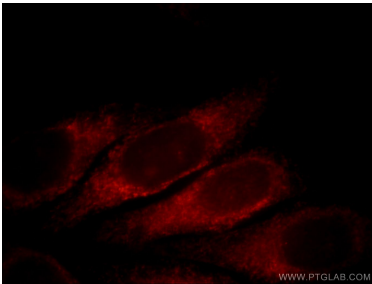
Immunohistochemical analysis of paraffin-embedded human kidney tissue slide using 11885-1-AP (SLC4A4 antibody) at dilution of 1:400 (under 10x lens). Heat mediated antigen retrieval with Tris-EDTA buffer (pH 9.0).



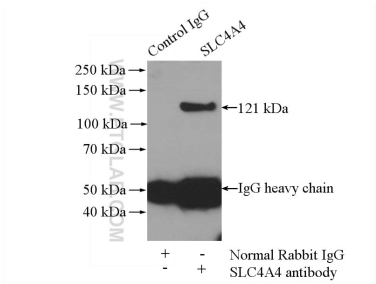
Immunohistochemical analysis of paraffin-embedded human kidney tissue slide using 11885-1-AP (SLC4A4 antibody) at dilution of 1:400 (under 40x lens). Heat mediated antigen retrieval with Tris-EDTA buffer (pH 9.0).



HEK-293 cells were subjected to SDS PAGE followed by western blot with 11885-1-AP (SLC4A4 antibody) at dilution of 1:400 incubated at room temperature for 1.5 hours.



Immunofluorescent analysis of HepG2 cells, using SLC4A4 antibody 11885-1-AP at 1:25 dilution and Rhodamine-labeled goat anti-rabbit IgG (red).



IP result of anti-SLC4A4 (IP:11885-1-AP, 4ug; Detection:11885-1-AP 1:400) with HEK-293 cells lysate 1200ug.