

For Research Use Only

# PSMA3 Polyclonal antibody, PBS Only

Catalog Number: 11887-1-PBS



## Basic Information

**Catalog Number:**

11887-1-PBS

**Size:**

100ug, Concentration: 1 mg/ml by Nanodrop;

**Source:**

Rabbit

**Isotype:**

IgG

**Immunogen Catalog Number:**

AG2495

**GenBank Accession Number:**

BC029402

**GeneID (NCBI):**

5684

**UNIPROT ID:**

P25788

**Full Name:**

proteasome (prosome, macropain) subunit, alpha type, 3

**Calculated MW:**

255 aa, 28 kDa

**Observed MW:**

28 kDa

**Purification Method:**

Antigen affinity purification

## Applications

**Tested Applications:**

WB, IHC, IF/ICC, Indirect ELISA

**Species Specificity:**

human, mouse, rat, monkey

## Background Information

PSMA3 (Proteasome subunit alpha type-3) is also named as HC8, PSC8 and belongs to the peptidase T1A family. The proteasome is a multicatalytic protease complex that catalyzes an energy-dependent, extralysosomal proteolytic pathway responsible for selective elimination of proteins with aberrant structures and naturally occurring short-lived proteins related to metabolic regulation and cell cycle progression. It has 2 isoforms produced by alternative splicing.

## Storage

**Storage:**

Store at -80°C.

**Storage Buffer:**

PBS Only

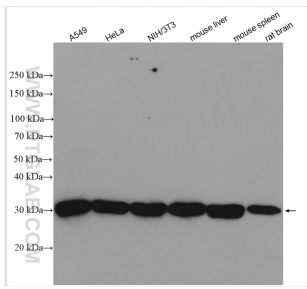
For technical support and original validation data for this product please contact:

T: 1 (888) 4PTGLAB (1-888-478-4522) (toll free in USA), or 1(312) 455-8498 (outside USA)

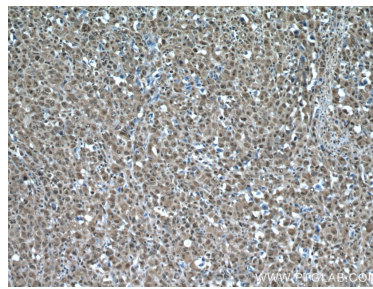
E: [proteintech@ptglab.com](mailto:proteintech@ptglab.com)  
W: [ptglab.com](http://ptglab.com)

**This product is exclusively available under Proteintech Group brand and is not available to purchase from any other manufacturer.**

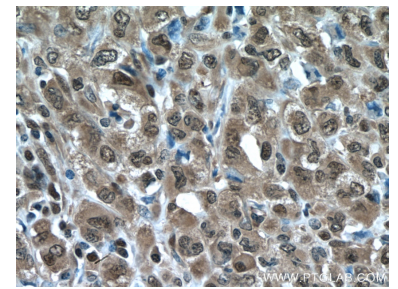
## Selected Validation Data



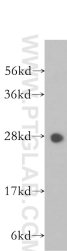
A549 cells were subjected to SDS PAGE followed by western blot with 11887-1-AP (PSMA3 antibody) at dilution of 1:4000 incubated at room temperature for 1.5 hours. This data was developed using the same antibody clone with 11887-1-PBS in a different storage buffer formulation.



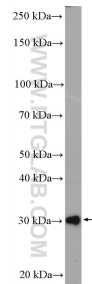
Immunohistochemical analysis of paraffin-embedded human lymphoma tissue slide using 11887-1-AP (PSMA3 antibody) at dilution of 1:200 (under 10x lens). Heat mediated antigen retrieval with Tris-EDTA buffer (pH 9.0). This data was developed using the same antibody clone with 11887-1-PBS in a different storage buffer formulation.



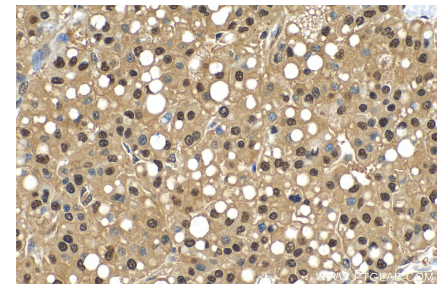
Immunohistochemical analysis of paraffin-embedded human lymphoma tissue slide using 11887-1-AP (PSMA3 antibody) at dilution of 1:200 (under 40x lens). Heat mediated antigen retrieval with Tris-EDTA buffer (pH 9.0). This data was developed using the same antibody clone with 11887-1-PBS in a different storage buffer formulation.



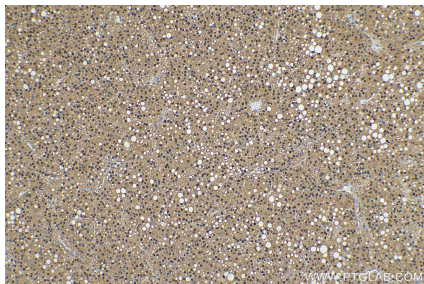
human lung tissue were subjected to SDS PAGE followed by western blot with 11887-1-AP (PSMA3 antibody) at dilution of 1:400 incubated at room temperature for 1.5 hours. This data was developed using the same antibody clone with 11887-1-PBS in a different storage buffer formulation.



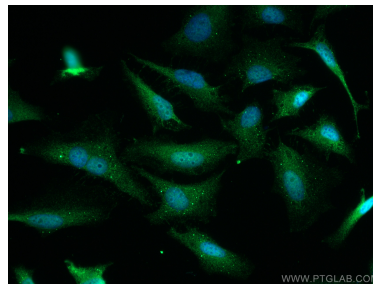
PC-12 cells were subjected to SDS PAGE followed by western blot with 11887-1-AP (PSMA3 antibody) at dilution of 1:1000 incubated at room temperature for 1.5 hours. This data was developed using the same antibody clone with 11887-1-PBS in a different storage buffer formulation.



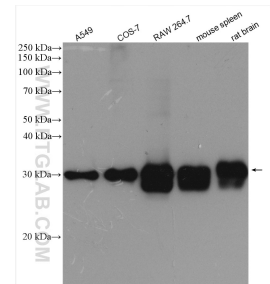
Immunohistochemical analysis of paraffin-embedded human liver cancer tissue slide using 11887-1-AP (PSMA3 antibody) at dilution of 1:500 (under 40x lens). Heat mediated antigen retrieval with Tris-EDTA buffer (pH 9.0). This data was developed using the same antibody clone with 11887-1-PBS in a different storage buffer formulation.



Immunohistochemical analysis of paraffin-embedded human liver cancer tissue slide using 11887-1-AP (PSMA3 antibody) at dilution of 1:500 (under 10x lens). Heat mediated antigen retrieval with Tris-EDTA buffer (pH 9.0). This data was developed using the same antibody clone with 11887-1-PBS in a different storage buffer formulation.



Immunofluorescent analysis of (4% PFA) fixed HeLa cells using PSMA3 antibody (11887-1-AP) at dilution of 1:400 and CoraLite®488-Conjugated AffiniPure Goat Anti-Rabbit IgG(H+L). This data was developed using the same antibody clone with 11887-1-PBS in a different storage buffer formulation.



Various lysates were subjected to SDS PAGE followed by western blot with 11887-1-AP (PSMA3 antibody) at dilution of 1:8000 incubated at room temperature for 1.5 hours. This data was developed using the same antibody clone with 11887-1-PBS in a different storage buffer formulation.



Immunohistochemical analysis of paraffin-embedded mouse brain tissue slide using 11887-1-AP (PSMA3 antibody) at dilution of 1:1000 (under 40x lens). Heat mediated antigen retrieval with Tris-EDTA buffer (pH 9.0). This data was developed using the same antibody clone with 11887-1-PBS in a different storage buffer formulation.

