

For Research Use Only

SCEL Polyclonal antibody

Catalog Number: 11906-1-AP



Basic Information

Catalog Number:

11906-1-AP

Size:

150ul, Concentration: 800 ug/ml by Nanodrop and 333 ug/ml by Bradford method using BSA as the standard;

Source:

Rabbit

Isotype:

IgG

Immunogen Catalog Number:

AG2578

GenBank Accession Number:

BC020726

GeneID (NCBI):

8796

UNIPROT ID:

O95171

Full Name:

sciellin

Calculated MW:

668 aa, 75 kDa

Observed MW:

70-78 kDa

Purification Method:

Antigen affinity purification

Recommended Dilutions:

WB 1:1000-1:5000

IHC 1:50-1:500

IF/ICC 1:50-1:500

Applications

Tested Applications:

WB, IHC, IF/ICC, FC (Intra), ELISA

Species Specificity:

human, mouse

Note-IHC: suggested antigen retrieval with **TE buffer pH 9.0; (*)** Alternatively, antigen retrieval may be performed with **citrate buffer pH 6.0**

Positive Controls:

WB : human saliva tissue, A431 cells, human skin tissue, mouse skin tissue

IHC : human renal cell carcinoma tissue,

IF/ICC : HepG2 cells,

Storage

Storage:

Store at -20°C. Stable for one year after shipment.

Storage Buffer:

PBS with 0.02% sodium azide and 50% glycerol pH 7.3.

Aliquoting is unnecessary for -20°C storage

*** 20ul sizes contain 0.1% BSA

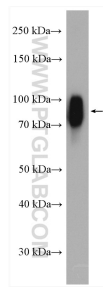
For technical support and original validation data for this product please contact:

T: 1 (888) 4PTGLAB (1-888-478-4522) (toll free in USA), or 1(312) 455-8498 (outside USA)

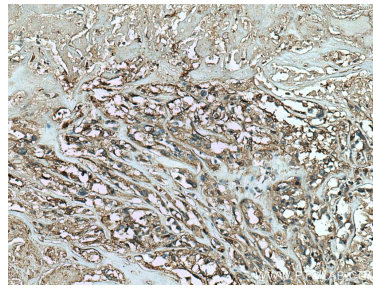
E: proteintech@ptglab.com
W: ptglab.com

This product is exclusively available under Proteintech Group brand and is not available to purchase from any other manufacturer.

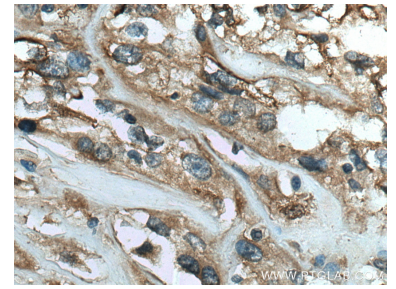
Selected Validation Data



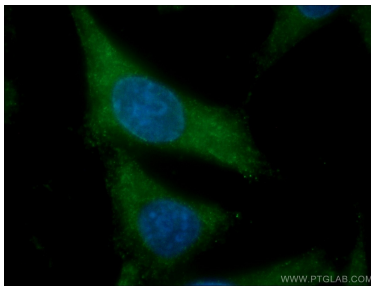
human saliva were subjected to SDS PAGE followed by western blot with 11906-1-AP (SCEL antibody) at dilution of 1:4000 incubated at room temperature for 1.5 hours.



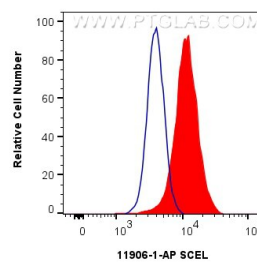
Immunohistochemical analysis of paraffin-embedded human renal cell carcinoma tissue slide using 11906-1-AP (SCEL antibody) at dilution of 1:200 (under 10x lens). Heat mediated antigen retrieval with Tris-EDTA buffer (pH 9.0).



Immunohistochemical analysis of paraffin-embedded human renal cell carcinoma tissue slide using 11906-1-AP (SCEL antibody) at dilution of 1:200 (under 40x lens). Heat mediated antigen retrieval with Tris-EDTA buffer (pH 9.0).



Immunofluorescent analysis of (-20°C Ethanol) fixed HepG2 cells using 11906-1-AP (SCEL antibody) at dilution of 1:50 and Coralite488-Conjugated AffiniPure Goat Anti-Rabbit IgG(H+L).



1x10⁶ HeLa cells were intracellularly stained with 0.25 ug SCEL Polyclonal antibody (11906-1-AP) and Coralite@488-Conjugated Goat Anti-Rabbit IgG(H+L) (SA00013-2)(red), or 0.25 ug Rabbit IgG control Rabbit PolyAb (30000-0-AP) (blue). Cells were fixed with 4% PFA and permeabilized with Flow Cytometry Perm Buffer (PF00011-C).