

For Research Use Only

# RABL3 Polyclonal antibody

Catalog Number: 11916-1-AP

Featured Product

2 Publications



## Basic Information

### Catalog Number:

11916-1-AP

### Size:

150ul, Concentration: 800 ug/ml by Nanodrop;

### Source:

Rabbit

### Isotype:

IgG

### Immunogen Catalog Number:

AG2531

### GenBank Accession Number:

BC020832

### GeneID (NCBI):

285282

### UNIPROT ID:

Q5HYI8

### Full Name:

RAB, member of RAS oncogene family-like 3

### Calculated MW:

236 aa, 26 kDa

### Observed MW:

26 kDa

### Purification Method:

Antigen affinity purification

### Recommended Dilutions:

WB 1:1000-1:5000

IP 0.5-4.0 ug for 1.0-3.0 mg of total protein lysate

IHC 1:20-1:200

IF/ICC 1:200-1:800

## Applications

### Tested Applications:

WB, IHC, IF/ICC, FC (Intra), IP, ELISA

### Cited Applications:

WB

### Species Specificity:

human, mouse

### Cited Species:

human

**Note-IHC: suggested antigen retrieval with TE buffer pH 9.0; (\*) Alternatively, antigen retrieval may be performed with citrate buffer pH 6.0**

### Positive Controls:

**WB**: HEK-293 cells, mouse brain tissue, human brain tissue, human lung tissue, HUVEC cells, U-251 cells

**IP**: mouse lung tissue,

**IHC**: human breast cancer tissue, human liver cancer tissue, human cervical cancer tissue, human kidney tissue

**IF/ICC**: A549 cells,

## Background Information

The gene of Rabl3 is located on 3q13.3 and is composed of eight exons and seven introns. It is a member of the Rab subfamily, the largest group in the Ras superfamily of small guanosine triphosphatases (GTPases).

## Notable Publications

Author	Pubmed ID	Journal	Application
Weihua Zhang	27164297	Med Sci Monit	WB
Li Qi Q	20596630	Oncol Rep	WB

## Storage

### Storage:

Store at -20°C. Stable for one year after shipment.

### Storage Buffer:

PBS with 0.02% sodium azide and 50% glycerol pH 7.3.

Aliquoting is unnecessary for -20°C storage

\*\*\* 20ul sizes contain 0.1% BSA

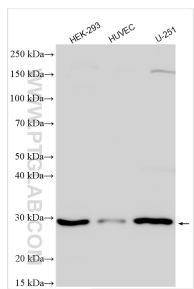
For technical support and original validation data for this product please contact:

T: 1 (888) 4PTGLAB (1-888-478-4522) (toll free in USA), or 1(312) 455-8498 (outside USA)

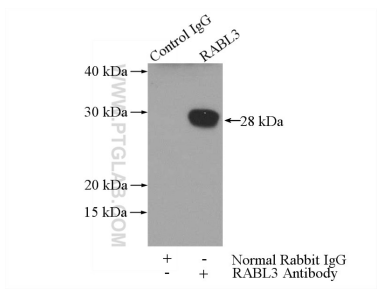
E: [proteintech@ptglab.com](mailto:proteintech@ptglab.com)  
W: [ptglab.com](http://ptglab.com)

This product is exclusively available under Proteintech Group brand and is not available to purchase from any other manufacturer.

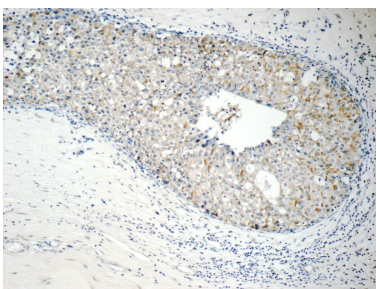
Selected Validation Data



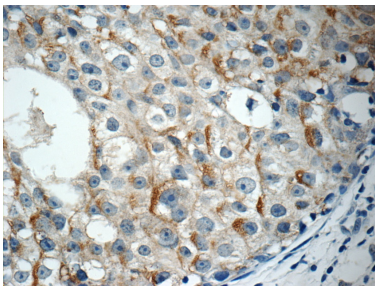
Various lysates were subjected to SDS PAGE followed by western blot with 11916-1-AP (RABL3 antibody) at dilution of 1:2500 incubated at room temperature for 1.5 hours.



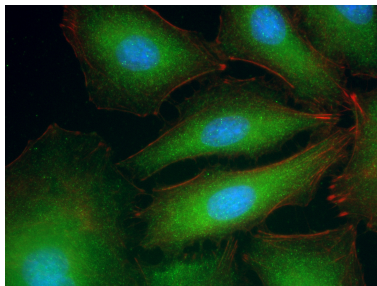
IP result of anti-RABL3 (IP:11916-1-AP, 3ug; Detection:11916-1-AP 1:300) with mouse lung tissue lysate 4000ug.



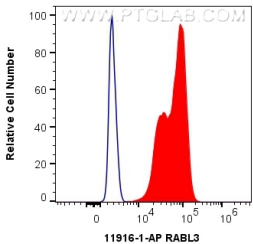
Immunohistochemical analysis of paraffin-embedded human breast cancer tissue slide using 11916-1-AP (RABL3 Antibody) at dilution of 1:50 (under 10x lens).



Immunohistochemical analysis of paraffin-embedded human breast cancer tissue slide using 11916-1-AP (RABL3 Antibody) at dilution of 1:50 (under 40x lens).



Immunofluorescent analysis of (-20°C Ethanol) fixed A549 cells using RABL3 antibody (11916-1-AP) at dilution of 1:400 and CoraLite®488-Conjugated Goat Anti-Rabbit IgG(H+L), CL594-Phalloidin (red).



1X10<sup>6</sup> HEK-293 cells were intracellularly stained with 0.4 ug Anti-Human RABL3 (11916-1-AP) and CoraLite®488-Conjugated Goat Anti-Rabbit IgG(H+L) at dilution 1:1000 (red), or 0.4 ug Isotype Control. Cells were fixed with 4% PFA and permeabilized with Flow Cytometry Perm Buffer (PF00011-C).