

For Research Use Only

# ICAM4 Polyclonal antibody, PBS Only

Catalog Number: 11918-1-PBS



## Basic Information

<b>Catalog Number:</b> 11918-1-PBS	<b>GenBank Accession Number:</b> BC029364	<b>Purification Method:</b> Antigen affinity purification
<b>Size:</b> 100ug , Concentration: 1 mg/ml by Nanodrop;	<b>GeneID (NCBI):</b> 3386	
<b>Source:</b> Rabbit	<b>UNIPROT ID:</b> Q14773	
<b>Isotype:</b> IgG	<b>Full Name:</b> intercellular adhesion molecule 4 (Landsteiner-Wiener blood group)	
<b>Immunogen Catalog Number:</b> AG2544	<b>Calculated MW:</b> 271 aa, 29 kDa	
	<b>Observed MW:</b> 42 kDa	

## Applications

**Tested Applications:**  
WB, Indirect ELISA

**Species Specificity:**  
human

## Background Information

This gene encodes the Landsteiner-Wiener (LW) blood group antigen(s) that belongs to the immunoglobulin (Ig) superfamily, and that shares similarity with the intercellular adhesion molecule (ICAM) protein family. The protein migrate as a 42kd glycoprotein on SDS PAGE. Alternative splicing results in multiple transcript variants encoding distinct isoforms.

## Storage

**Storage:**  
Store at -80°C.

**Storage Buffer:**  
PBS only, pH7.3

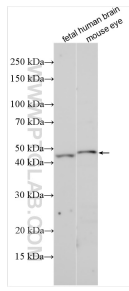
For technical support and original validation data for this product please contact:

T: 1 (888) 4PTGLAB (1-888-478-4522) (toll free in USA), or 1(312) 455-8498 (outside USA)

E: [proteintech@ptglab.com](mailto:proteintech@ptglab.com)  
W: [ptglab.com](http://ptglab.com)

**This product is exclusively available under Proteintech Group brand and is not available to purchase from any other manufacturer.**

## Selected Validation Data



Various lysates were subjected to SDS PAGE followed by western blot with 11918-1-AP (ICAM4 antibody) at dilution of 1:500 incubated at room temperature for 1.5 hours. This data was developed using the same antibody clone with 11918-1-PBS in a different storage buffer formulation.