

For Research Use Only

AGFG2 Polyclonal antibody

Catalog Number: 11919-1-AP



Basic Information

Catalog Number: 11919-1-AP	GenBank Accession Number: BC017329	Purification Method: Antigen affinity purification
Size: 150ul , Concentration: 500 µg/ml by Nanodrop and 333 µg/ml by Bradford method using BSA as the standard;	GeneID (NCBI): 3268	Recommended Dilutions: WB 1:500-1:1000 IHC 1:20-1:200 IF 1:10-1:100
Source: Rabbit	Full Name: ArfGAP with FG repeats 2	
Isotype: IgG	Calculated MW: 481 aa, 49 kDa	
Immunogen Catalog Number: AG2546	Observed MW: 49 kDa	

Applications

Tested Applications:

IF, IHC, WB, ELISA

Species Specificity:

human, mouse, rat

Note-IHC: suggested antigen retrieval with TE buffer pH 9.0; (*) Alternatively, antigen retrieval may be performed with citrate buffer pH 6.0

Positive Controls:

WB : Jurkat cells, K-562 cells

IHC : human lymphoma tissue,

IF : HepG2 cells,

Background Information

Storage

Storage:

Store at -20°C. Stable for one year after shipment.

Storage Buffer:

PBS with 0.02% sodium azide and 50% glycerol pH 7.3.

Aliquoting is unnecessary for -20°C storage

*** 20ul sizes contain 0.1% BSA

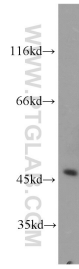
For technical support and original validation data for this product please contact:

T: 1 (888) 4PTGLAB (1-888-478-4522) (toll free in USA), or 1(312) 455-8498 (outside USA)

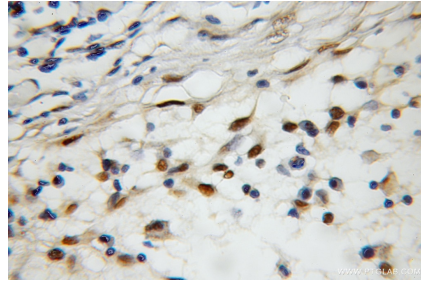
E: proteintech@ptglab.com
W: ptglab.com

This product is exclusively available under Proteintech Group brand and is not available to purchase from any other manufacturer.

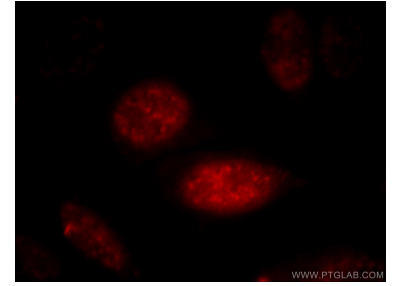
Selected Validation Data



Jurkat cells were subjected to SDS PAGE followed by western blot with 11919-1-AP (AGFG2 antibody) at dilution of 1:800 incubated at room temperature for 1.5 hours.



Immunohistochemical analysis of paraffin-embedded human lymphoma using 11919-1-AP (AGFG2 antibody) at dilution of 1:50 (under 10x lens).



Immunofluorescent analysis of HepG2 cells, using AGFG2 antibody 11919-1-AP at 1:25 dilution and Rhodamine-labeled goat anti-rabbit IgG (red).