

For Research Use Only

RASSF6 Polyclonal antibody

Catalog Number: 11921-1-AP

Featured Product

14 Publications



Basic Information

Catalog Number:

11921-1-AP

Size:

150ul, Concentration: 550 ug/ml by Nanodrop and 533 ug/ml by Bradford method using BSA as the standard;

Source:

Rabbit

Isotype:

IgG

Immunogen Catalog Number:

AG2565

GenBank Accession Number:

BC058835

GeneID (NCBI):

166824

UNIPROT ID:

Q6ZTQ3

Full Name:

Ras association (RalGDS/AF-6) domain family member 6

Calculated MW:

369 aa, 43 kDa

Observed MW:

43 kDa

Purification Method:

Antigen affinity purification

Recommended Dilutions:

WB 1:500-1:2000

IP 0.5-4.0 ug for 1.0-3.0 mg of total protein lysate

IHC 1:20-1:200

IF/ICC 1:10-1:100

Applications

Tested Applications:

WB, IHC, IF/ICC, IP, ELISA

Cited Applications:

WB, IHC, IP, ColP, IF

Species Specificity:

human

Cited Species:

human, mouse

Note-IHC: suggested antigen retrieval with TE buffer pH 9.0; (*) Alternatively, antigen retrieval may be performed with citrate buffer pH 6.0

Positive Controls:

WB : HT-29 cells, COLO 320 cells, HeLa cells, HepG2 cells, MDA-MB-453s cells, PC-3 cells, U-937 cells

IP : HepG2 cells,

IHC : human ovary tumor tissue, human prostate cancer tissue

IF/ICC : Hela cells,

Notable Publications

Author	Pubmed ID	Journal	Application
Mayu Morishita	34652874	Genes Cells	WB
Xiaoyin Xu	29193479	Genes Cells	WB,IF,IP,ColP
Leilei Zheng	31812473	J Genet Genomics	WB,IHC

Storage

Storage:

Store at -20°C. Stable for one year after shipment.

Storage Buffer:

PBS with 0.02% sodium azide and 50% glycerol pH 7.3.

Aliquoting is unnecessary for -20°C storage

*** 20ul sizes contain 0.1% BSA

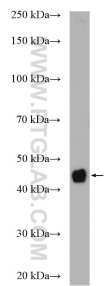
For technical support and original validation data for this product please contact:

T: 1 (888) 4PTGLAB (1-888-478-4522) (toll free in USA), or 1(312) 455-8498 (outside USA)

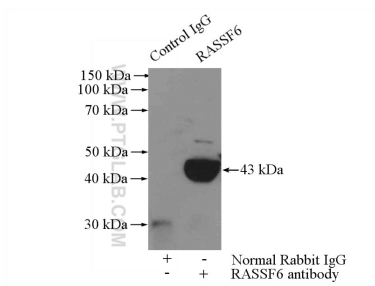
E: proteintech@ptglab.com
W: ptglab.com

This product is exclusively available under Proteintech Group brand and is not available to purchase from any other manufacturer.

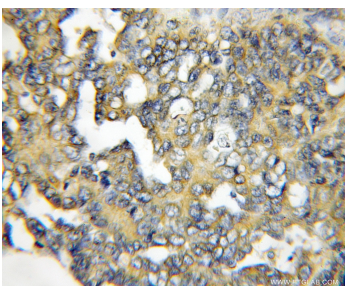
Selected Validation Data



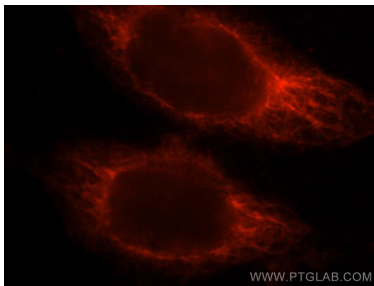
HT-29 cells were subjected to SDS PAGE followed by western blot with 11921-1-AP (RASSF6 antibody) at dilution of 1:1000 incubated at room temperature for 1.5 hours.



IP result of anti-RASSF6 (IP:11921-1-AP, 4ug; Detection:11921-1-AP 1:500) with HepG2 cells lysate 2400ug.



Immunohistochemical analysis of paraffin-embedded human ovary tumor using 11921-1-AP (RASSF6 antibody) at dilution of 1:100 (under 10x lens).



Immunofluorescent analysis of HeLa cells, using RASSF6 antibody 11921-1-AP at 1:25 dilution and Rhodamine-labeled goat anti-rabbit IgG (red).