

For Research Use Only

Kininogen 1 Polyclonal antibody

Catalog Number: 11926-1-AP

7 Publications



Basic Information

Catalog Number:

11926-1-AP

Size:

150ul, Concentration: 450 ug/ml by Nanodrop and 267 ug/ml by Bradford method using BSA as the standard;

Source:

Rabbit

Isotype:

IgG

Immunogen Catalog Number:

AG2574

GenBank Accession Number:

BC060039

GeneID (NCBI):

3827

UNIPROT ID:

P01042

Full Name:

kininogen 1

Calculated MW:

644 aa, 72 kDa

Observed MW:

48 kDa, 72 kDa

Purification Method:

Antigen affinity purification

Recommended Dilutions:

WB 1:500-1:1000

IHC 1:50-1:500

IF/ICC 1:10-1:100

Applications

Tested Applications:

WB, IHC, IF/ICC, ELISA

Cited Applications:

WB, IF, CoIP

Species Specificity:

human

Cited Species:

human, mouse, rat

Note-IHC: suggested antigen retrieval with TE buffer pH 9.0; (*) Alternatively, antigen retrieval may be performed with citrate buffer pH 6.0

Positive Controls:

WB: HeLa cells, A2780 cells, COLO 320 cells, MCF-7 cells, mouse kidney tissue

IHC: human kidney tissue, human endometrial cancer tissue

IF/ICC: HepG2 cells,

Background Information

Kininogens are inhibitors of thiol proteases. Kininogen 1 plays important role in Kinin-kallikrein system. This KNG1 gene contains 10 exons and encodes two proteins through alternative splicing: high molecular weight kininogen (HMWK) (72kDa) and low molecular weight kininogen (LMWK) (48kDa) (PMID: 37442062). HMWK is produced by the liver together with prekallikrein. It acts mainly as a cofactor on coagulation and inflammation, and has no intrinsic catalytic activity. LMWK is produced locally by numerous tissues, and secreted together with tissue kallikrein. 11926-1-AP was generated against N-terminal 300 aa of HMW kininogen. It can bind both HMW and LMW kininogen.

Notable Publications

Author	Pubmed ID	Journal	Application
Bo Ma	30235220	PLoS One	WB
Shen Liu	33144554	Med Sci Monit	WB
Qin Zheng	29734187	Cell Physiol Biochem	WB

Storage

Storage:

Store at -20°C. Stable for one year after shipment.

Storage Buffer:

PBS with 0.02% sodium azide and 50% glycerol pH 7.3.

Aliquoting is unnecessary for -20°C storage

*** 20ul sizes contain 0.1% BSA

For technical support and original validation data for this product please contact:

T: 1 (888) 4PTGLAB (1-888-478-4522) (toll free in USA), or 1(312) 455-8498 (outside USA)

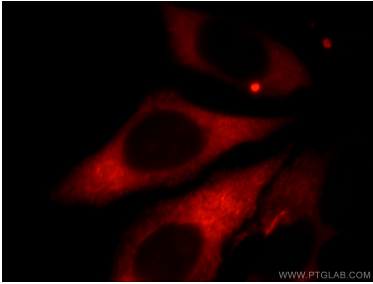
E: proteintech@ptglab.com
W: ptglab.com

This product is exclusively available under Proteintech Group brand and is not available to purchase from any other manufacturer.

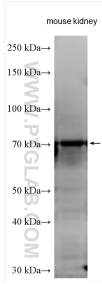
Selected Validation Data



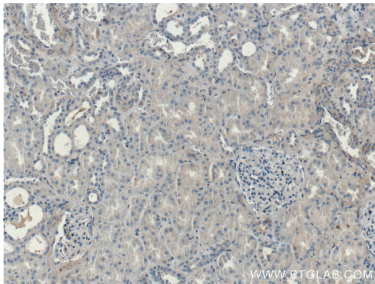
HeLa cells were subjected to SDS PAGE followed by western blot with 11926-1-AP (Kininogen 1 antibody) at dilution of 1:500 incubated at room temperature for 1.5 hours.



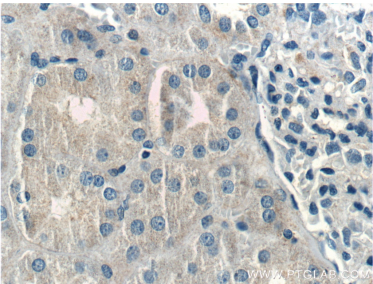
Immunofluorescent analysis of HepG2 cells, using KNG1 antibody 11926-1-AP at 1:25 dilution and Rhodamine-labeled goat anti-rabbit IgG (red).



Various lysates were subjected to SDS PAGE followed by western blot with 11926-1-AP (Kininogen 1 antibody) at dilution of 1:600 incubated at room temperature for 1.5 hours.



Immunohistochemical analysis of paraffin-embedded human kidney tissue slide using 11926-1-AP (Kininogen 1 antibody at dilution of 1:200 (under 10x lens).



Immunohistochemical analysis of paraffin-embedded human kidney tissue slide using 11926-1-AP (Kininogen 1 antibody at dilution of 1:200 (under 40x lens).