

For Research Use Only

MS4A6A Polyclonal antibody

Catalog Number: 11930-1-AP



Basic Information

Catalog Number: 11930-1-AP	GenBank Accession Number: BC022854	Purification Method: Antigen affinity purification
Size: 150ul , Concentration: 650 µg/ml by Nanodrop;	GeneID (NCBI): 64231	Recommended Dilutions: WB 1:500-1:3000
Source: Rabbit	Full Name: membrane-spanning 4-domains, subfamily A, member 6A	
Isotype: IgG	Calculated MW: 248 aa, 27 kDa	
Immunogen Catalog Number: AG2464	Observed MW: 18 kDa	

Applications

Tested Applications: WB, ELISA	Positive Controls: WB : K-562 cells,
Species Specificity: human	

Background Information

Storage

Storage:
Store at -20°C. Stable for one year after shipment.
Storage Buffer:
PBS with 0.02% sodium azide and 50% glycerol pH 7.3.
Aliquoting is unnecessary for -20°C storage

*** 20ul sizes contain 0.1% BSA

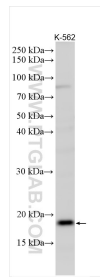
For technical support and original validation data for this product please contact:

T: 1 (888) 4PTGLAB (1-888-478-4522) (toll free in USA), or 1(312) 455-8498 (outside USA)

E: proteintech@ptglab.com
W: ptglab.com

This product is exclusively available under Proteintech Group brand and is not available to purchase from any other manufacturer.

Selected Validation Data



K-562 cells lysates were subjected to SDS PAGE followed by western blot with 11930-1-AP (MS4A6A antibody) at dilution of 1:1500 incubated at room temperature for 1.5 hours.