

For Research Use Only

# CSPP1 Polyclonal antibody

Catalog Number: 11931-1-AP

Featured Product

12 Publications



## Basic Information

### Catalog Number:

11931-1-AP

### Size:

150ul, Concentration: 800 ug/ml by Nanodrop and 393 ug/ml by Bradford method using BSA as the standard;

### Source:

Rabbit

### Isotype:

IgG

### Immunogen Catalog Number:

AG2521

### GenBank Accession Number:

BC029445

### GeneID (NCBI):

79848

### UNIPROT ID:

Q1MSJ5

### Full Name:

centrosome and spindle pole associated protein 1

### Calculated MW:

141 kDa

### Observed MW:

141 kDa

### Purification Method:

Antigen affinity purification

### Recommended Dilutions:

WB 1:500-1:1000

IF/ICC 1:50-1:500

## Applications

### Tested Applications:

WB, IF/ICC, ELISA

### Cited Applications:

WB, IHC, IP, IF

### Species Specificity:

human, mouse, rat

### Cited Species:

human, mouse

### Positive Controls:

WB: Jurkat cells, HEK-293 cells, HeLa cells, mouse testis tissue, rat testis tissue

IF/ICC: HeLa cells,

## Background Information

CSPP1 interacts with centrosomes and microtubules and plays a role in cell-cycle progression and spindle organization. CSPP1 is required for their common C-terminal domain to interact with Nephrocystin 8 (NPHP8/RPGRIPL1) and to form a ternary complex with NPHP8 and NPHP4, and for ciliogenesis in hTERT-RPE1 cells in vitro and are expressed in ciliated renal, retinal, and respiratory cells in vivo

## Notable Publications

Author	Pubmed ID	Journal	Application
Cecilia Aquino Perez	34080749	EMBO Rep	WB
Robert F Shearer	29742019	Mol Biol Cell	WB,IF
Kiet Hua	28352462	Cilia	IF

## Storage

### Storage:

Store at -20°C. Stable for one year after shipment.

### Storage Buffer:

PBS with 0.02% sodium azide and 50% glycerol pH 7.3.

Aliquoting is unnecessary for -20°C storage

\*\*\* 20ul sizes contain 0.1% BSA

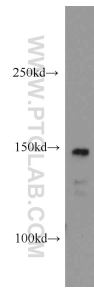
For technical support and original validation data for this product please contact:

T: 1 (888) 4PTGLAB (1-888-478-4522) (toll free in USA), or 1(312) 455-8498 (outside USA)

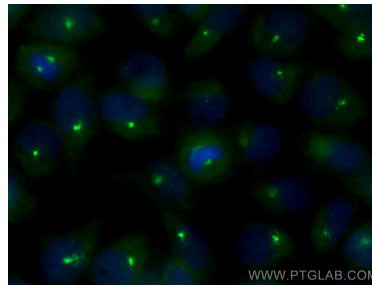
E: [proteintech@ptglab.com](mailto:proteintech@ptglab.com)  
W: [ptglab.com](http://ptglab.com)

This product is exclusively available under Proteintech Group brand and is not available to purchase from any other manufacturer.

## Selected Validation Data



Jurkat cells were subjected to SDS PAGE followed by western blot with 11931-1-AP (CSPP1 antibody) at dilution of 1:200 incubated at room temperature for 1.5 hours.



Immunofluorescent analysis of (-20°C Methanol) fixed HeLa cells using CSPP1 antibody (11931-1-AP) at dilution of 1:200 and CoraLite®488-Conjugated Goat Anti-Rabbit IgG(H+L).