

For Research Use Only

PRAP1 Polyclonal antibody

Catalog Number: 11932-1-AP **1 Publications**



Basic Information

Catalog Number: 11932-1-AP	GenBank Accession Number: BC029447	Purification Method: Antigen affinity purification
Size: 150ul, Concentration: 600 µg/ml by Nanodrop and 340 µg/ml by Bradford method using BSA as the standard;	GeneID (NCBI): 118471	Recommended Dilutions: WB 1:500-1:2000 IHC 1:20-1:200
Source: Rabbit	Full Name: proline-rich acidic protein 1	
Isotype: IgG	Calculated MW: 151 aa, 17 kDa	
Immunogen Catalog Number: AG2526	Observed MW: 16-20 kDa	

Applications

Tested Applications: IHC, WB, ELISA	Positive Controls: WB: L02 cells, mouse pancreas tissue
Cited Applications: IHC, WB	IHC: human liver tissue, human kidney tissue, mouse small intestine tissue
Species Specificity: human, mouse	
Cited Species: human	

Note-IHC: suggested antigen retrieval with TE buffer pH 9.0; (*) Alternatively, antigen retrieval may be performed with citrate buffer pH 6.0

Background Information

Proline rich acidic protein 1 (PRAP1) is also named as PRO1195 or UPA. It may play an important role in maintaining normal growth homeostasis in epithelial cells. Mitotic arrest deficient 1 (MAD1) is a key component in mitotic checkpoint signalling. Recent study identified PRAP1 as a novel MAD1 binding partner using yeast-two hybrid screening (PMID: 24374861). PRAP1 has four isoforms with MW 16-20 kDa and 10 kDa.

Notable Publications

Author	Pubmed ID	Journal	Application
Qiumo Zhang	35978266	Adv Sci (Weinh)	IHC, WB

Storage

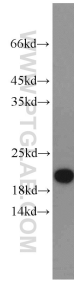
Storage:
Store at -20°C. Stable for one year after shipment.
Storage Buffer:
PBS with 0.02% sodium azide and 50% glycerol pH 7.3.
Aliquoting is unnecessary for -20°C storage

*** 20ul sizes contain 0.1% BSA

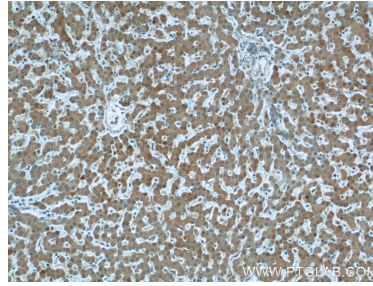
For technical support and original validation data for this product please contact:
T: 1 (888) 4PTGLAB (1-888-478-4522) (toll free in USA), or 1(312) 455-8498 (outside USA)
E: proteintech@ptglab.com
W: ptglab.com

This product is exclusively available under Proteintech Group brand and is not available to purchase from any other manufacturer.

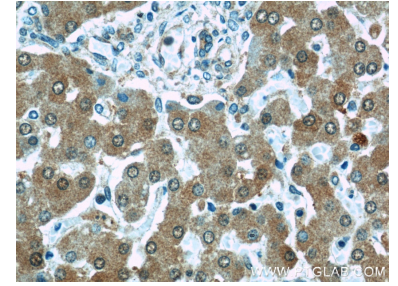
Selected Validation Data



L02 cells were subjected to SDS PAGE followed by western blot with 11932-1-AP (PRAP1 antibody) at dilution of 1:1000 incubated at room temperature for 1.5 hours.



Immunohistochemical analysis of paraffin-embedded human liver using 11932-1-AP (PRAP1 antibody) at dilution of 1:50 (under 10x lens).



Immunohistochemical analysis of paraffin-embedded human liver using 11932-1-AP (PRAP1 antibody) at dilution of 1:50 (under 40x lens).