

For Research Use Only

ARHGAP15 Polyclonal antibody

Catalog Number: 11940-1-AP

Featured Product

3 Publications



Basic Information

Catalog Number:

11940-1-AP

Size:

150ul, Concentration: 200 ug/ml by Nanodrop and 147 ug/ml by Bradford method using BSA as the standard;

Source:

Rabbit

Isotype:

IgG

Immunogen Catalog Number:

AG2538

GenBank Accession Number:

BC016701

GeneID (NCBI):

55843

UNIPROT ID:

Q53QZ3

Full Name:

Rho GTPase activating protein 15

Calculated MW:

475 aa, 55 kDa

Observed MW:

50-55 kDa

Purification Method:

Antigen affinity purification

Recommended Dilutions:

WB 1:1000-1:8000

IHC 1:50-1:500

IF/ICC 1:50-1:500

Applications

Tested Applications:

WB, IHC, IF/ICC, ELISA

Cited Applications:

WB, IHC, IF

Species Specificity:

human, mouse, rat

Cited Species:

human, mouse

Positive Controls:

WB : HL-60 cells, Jurkat cells

IHC : human colon tissue,

IF/ICC : Jurkat cells,

Note-IHC: suggested antigen retrieval with TE buffer pH 9.0; (*) Alternatively, antigen retrieval may be performed with citrate buffer pH 6.0

Background Information

ARHGAP15 (Rho GTPase Activating Protein 15) is a Rac1-specific GAP. Diseases associated with ARHGAP15 include Diverticulitis and Meier-Gorlin Syndrome 2. Among its related pathways are Signaling by Rho GTPases and RAC2 GTPase cycle. ARHGAP15 deregulation is implicated in many abnormalities (PMID: 29867200). ARHGAP15 decreased in glioma, which promoted the aggressive phenotypes of glioma cells through the activation of Rac19. Intronic mutation of ARHGAP15 is associated with diverticular disease. In addition, ARHGAP15 was a prognosis-related biomarker for pancreatic ductal adenocarcinoma (PMID: 28979141).

Notable Publications

Author	Pubmed ID	Journal	Application
Zhen Sun	27862679	Cancer Sci	WB, IHC
Cheng-Yi Yang	30992372	J Neurosci	WB
Kang Guo	33692998	Front Cell Dev Biol	IF

Storage

Storage:

Store at -20°C. Stable for one year after shipment.

Storage Buffer:

PBS with 0.02% sodium azide and 50% glycerol pH 7.3.

Aliquoting is unnecessary for -20°C storage

*** 20ul sizes contain 0.1% BSA

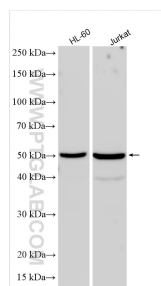
For technical support and original validation data for this product please contact:

T: 1 (888) 4PTGLAB (1-888-478-4522) (toll free in USA), or 1(312) 455-8498 (outside USA)

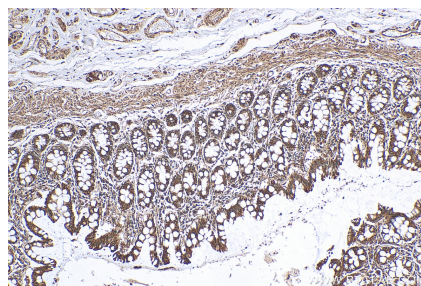
E: proteintech@ptglab.com
W: ptglab.com

This product is exclusively available under Proteintech Group brand and is not available to purchase from any other manufacturer.

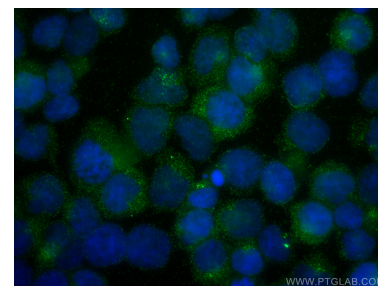
Selected Validation Data



Various lysates were subjected to SDS PAGE followed by western blot with 11940-1-AP (ARHGAP15 antibody) at dilution of 1:4000 incubated at room temperature for 1.5 hours.



Immunohistochemical analysis of paraffin-embedded human colon tissue slide using 11940-1-AP (ARHGAP15 antibody) at dilution of 1:200 (under 40x lens). Heat mediated antigen retrieval with Tris-EDTA buffer (pH 9.0).



Immunofluorescent analysis of (4% PFA) fixed Jurkat cells using ARHGAP15 antibody (11940-1-AP, Clone: 50-55 kDa) at dilution of 1:200 and CoraLite®488-Conjugated Goat Anti-Rabbit IgG(H+L).