

For Research Use Only

PSMA4 Polyclonal antibody

Catalog Number: 11943-2-AP **4 Publications**



Basic Information

Catalog Number: 11943-2-AP	GenBank Accession Number: BC056249	Purification Method: Antigen affinity purification
Size: 150ul, Concentration: 650 µg/ml by Nanodrop and 333 µg/ml by Bradford method using BSA as the standard;	GeneID (NCBI): 5685	Recommended Dilutions: WB 1:1000-1:4000 IP 0.5-4.0 µg for 1.0-3.0 mg of total protein lysate IHC 1:50-1:500 IF 1:50-1:500
Source: Rabbit	Full Name: proteasome (prosome, macropain) subunit, alpha type, 4	
Isotype: IgG	Calculated MW: 237 aa, 27 kDa	
Immunogen Catalog Number: AG2542	Observed MW: 29 kDa	

Applications

Tested Applications:
IF, IHC, IP, WB, ELISA

Cited Applications:
IHC, WB

Species Specificity:
human, mouse, rat

Cited Species:
human, mouse

Note-IHC: suggested antigen retrieval with TE buffer pH 9.0; (*) Alternatively, antigen retrieval may be performed with citrate buffer pH 6.0

Positive Controls:

WB: BxPC-3 cells, mouse kidney tissue, mouse spleen tissue, K-562 cells, U-937 cells

IP: BxPC-3 cells,

IHC: human pancreas cancer tissue, mouse liver tissue

IF: HeLa cells,

Background Information

Notable Publications

Author	Pubmed ID	Journal	Application
Monica Benvenuto	34561494	Sci Rep	IHC
Jayashree Chadchankar	31703099	PLoS One	WB
Hiroyuki Kondo	31915251	J Biol Chem	WB,IHC

Storage

Storage:

Store at -20°C. Stable for one year after shipment.

Storage Buffer:

PBS with 0.02% sodium azide and 50% glycerol pH 7.3.

Aliquoting is unnecessary for -20°C storage

*** 20ul sizes contain 0.1% BSA

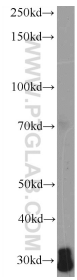
For technical support and original validation data for this product please contact:

T: 1 (888) 4PTGLAB (1-888-478-4522) (toll free in USA), or 1(312) 455-8498 (outside USA)

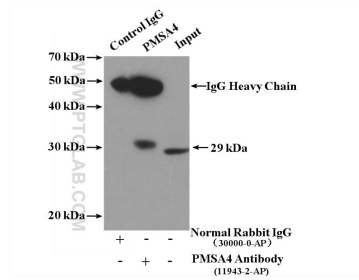
E: proteintech@ptglab.com
W: ptglab.com

This product is exclusively available under Proteintech Group brand and is not available to purchase from any other manufacturer.

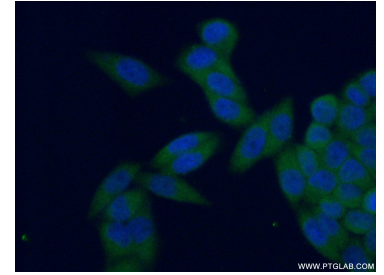
Selected Validation Data



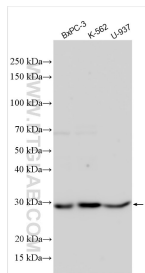
K-562 cells were subjected to SDS PAGE followed by western blot with 11943-2-AP (PSMA4 Antibody) at dilution of 1:1000 incubated at 4 degree celsius over night.



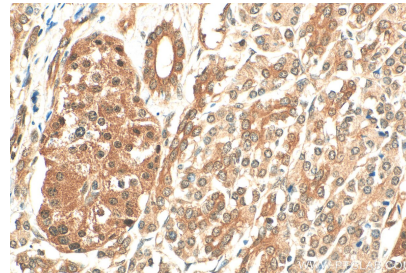
IP Result of anti-PSMA4 (IP:11943-2-AP, 4ug; Detection:11943-2-AP 1:500) with BxPC-3 cells lysate 2800ug.



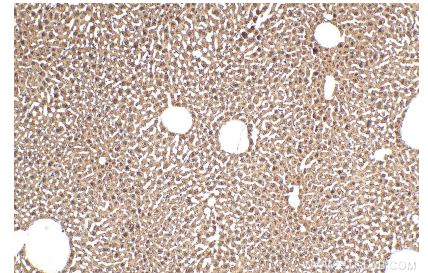
Immunofluorescent analysis of (4% PFA) fixed HeLa cells using 11943-2-AP (PSMA4 antibody) at dilution of 1:50 and Alexa Fluor 488-conjugated AffiniPure Goat Anti-Rabbit IgG(H+L).



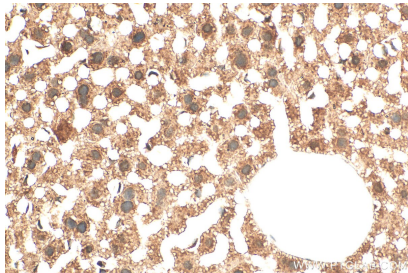
Various lysates were subjected to SDS PAGE followed by western blot with 11943-2-AP (PSMA4 antibody) at dilution of 1:2000 incubated at room temperature for 1.5 hours.



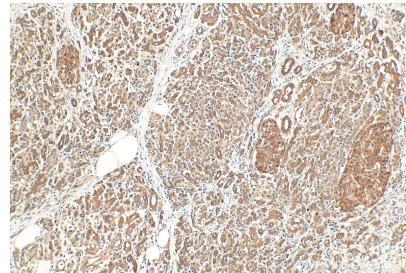
Immunohistochemical analysis of paraffin-embedded human pancreas cancer tissue slide using 11943-2-AP (PSMA4 antibody) at dilution of 1:200 (under 40x lens). Heat mediated antigen retrieval with Tris-EDTA buffer (pH 9.0).



Immunohistochemical analysis of paraffin-embedded mouse liver tissue slide using 11943-2-AP (PSMA4 antibody) at dilution of 1:200 (under 10x lens). Heat mediated antigen retrieval with Tris-EDTA buffer (pH 9.0).



Immunohistochemical analysis of paraffin-embedded mouse liver tissue slide using 11943-2-AP (PSMA4 antibody) at dilution of 1:200 (under 40x lens). Heat mediated antigen retrieval with Tris-EDTA buffer (pH 9.0).



Immunohistochemical analysis of paraffin-embedded human pancreas cancer tissue slide using 11943-2-AP (PSMA4 antibody) at dilution of 1:200 (under 10x lens). Heat mediated antigen retrieval with Tris-EDTA buffer (pH 9.0).