

For Research Use Only

# ATF1 Polyclonal antibody, PBS Only

Catalog Number: 11946-1-PBS

Featured Product



## Basic Information

**Catalog Number:**

11946-1-PBS

**Size:**

100ug, Concentration: 1 mg/ml by Nanodrop;

**Source:**

Rabbit

**Isotype:**

IgG

**Immunogen Catalog Number:**

AG2548

**GenBank Accession Number:**

BC029619

**GeneID (NCBI):**

466

**UNIPROT ID:**

P18846

**Full Name:**

activating transcription factor 1

**Calculated MW:**

271 aa, 29 kDa

**Observed MW:**

35 kDa

**Purification Method:**

Antigen affinity purification

## Applications

**Tested Applications:**

WB, IF/ICC, IP, Indirect ELISA

**Species Specificity:**

human

## Background Information

TFs play a vital role in maintaining cell homeostasis by combining DNA regulatory sequences to regulate gene transcription rates. Activating transcription factor 1 (ATF1) is a member of the ATF/CREB family of transcription factors (TFs), specifically interacting with the consensus ATF/CRE site 'TGACGTCA' (PMID: 28032861). ATF1 transcriptionally regulates the expressions of target genes to mediate various cellular processes, and ATF1 effects the progression of tumors (including lung cancer, colorectal cancer, and nasopharyngeal carcinoma).

## Storage

**Storage:**

Store at -80°C.

**Storage Buffer:**

PBS only, pH7.3

For technical support and original validation data for this product please contact:

T: 1 (888) 4PTGLAB (1-888-478-4522) (toll free in USA), or 1(312) 455-8498 (outside USA)

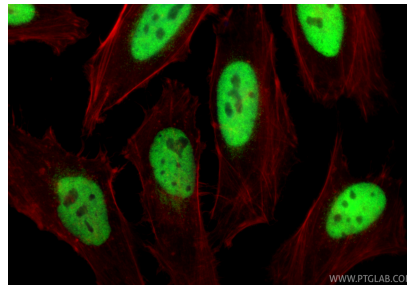
E: [proteintech@ptglab.com](mailto:proteintech@ptglab.com)  
W: [ptglab.com](http://ptglab.com)

This product is exclusively available under Proteintech Group brand and is not available to purchase from any other manufacturer.

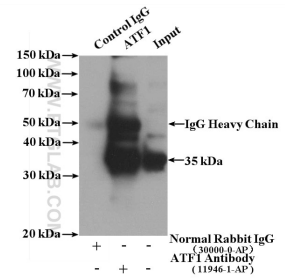
## Selected Validation Data



HeLa cells were subjected to SDS PAGE followed by western blot with 11946-1-AP (ATF1 antibody) at dilution of 1:500 incubated at room temperature for 1.5 hours. This data was developed using the same antibody clone with 11946-1-PBS in a different storage buffer formulation.



Immunofluorescent analysis of (4% PFA) fixed HeLa cells using ATF1 antibody (11946-1-AP) at dilution of 1:1000 and CoraLite@488-Conjugated Goat Anti-Rabbit IgG(H+L) (SA00013-2), CL594-Phalloidin (red). This data was developed using the same antibody clone with 11946-1-PBS in a different storage buffer formulation.



IP result of anti-ATF1 (IP:11946-1-AP, 4ug; Detection:11946-1-AP 1:500) with HeLa cells lysate 3200ug. This data was developed using the same antibody clone with 11946-1-PBS in a different storage buffer formulation.