

For Research Use Only

SUB1 Polyclonal antibody

Catalog Number: 11956-1-AP

Featured Product



Basic Information

Catalog Number: 11956-1-AP	GenBank Accession Number: BC022339	Purification Method: Antigen affinity purification
Size: 150ul, Concentration: 1000 µg/ml by Nanodrop and 580 µg/ml by Bradford method using BSA as the standard;	GeneID (NCBI): 10923	Recommended Dilutions: WB 1:500-1:2000 IHC 1:50-1:500 IF 1:50-1:500
Source: Rabbit	Full Name: SUB1 homolog (S. cerevisiae)	
Isotype: IgG	Calculated MW: 14 kDa	
Immunogen Catalog Number: AG2559	Observed MW: 18-23 kDa	

Applications

Tested Applications: IF, IHC, WB, ELISA	Positive Controls: WB: rat liver tissue, HeLa cells, C2C12 cells
Species Specificity: human, mouse, rat	IHC: human gliomas tissue, IF: HeLa cells,
Note-IHC: suggested antigen retrieval with TE buffer pH 9.0; (*) Alternatively, antigen retrieval may be performed with citrate buffer pH 6.0	

Background Information

SUB1 gene encodes activated RNA polymerase II transcriptional coactivator p15, also termed as positive cofactor 4 (PC4) or p14. SUB1 is a sort of general coactivator that functions in assembling and stabilization of transcription complex. It has DNA binding activity and is localized in the nucleus, multiple modification sites of phosphorylation or acetylation may turn it appear slightly shifted molecular weight. Catalog#11956-1-AP is a rabbit polyclonal antibody raised against full-length human SUB1. This antibody recognize 14-16 kDa (P14 or P15), 20 kDa (phospho form) and 30 kDa (Dimer form).

Storage

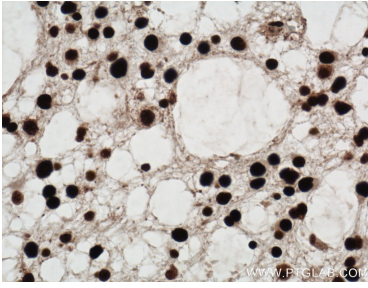
Storage:
Store at -20°C. Stable for one year after shipment.
Storage Buffer:
PBS with 0.02% sodium azide and 50% glycerol pH 7.3.
Aliquoting is unnecessary for -20°C storage

*** 20ul sizes contain 0.1% BSA

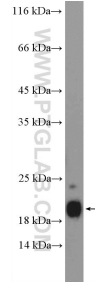
For technical support and original validation data for this product please contact:
T: 1 (888) 4PTGLAB (1-888-478-4522) (toll free in USA), or 1(312) 455-8498 (outside USA) E: proteintech@ptglab.com W: ptglab.com

This product is exclusively available under Proteintech Group brand and is not available to purchase from any other manufacturer.

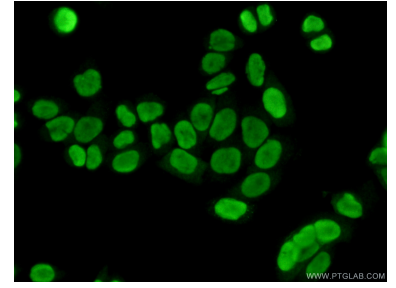
Selected Validation Data



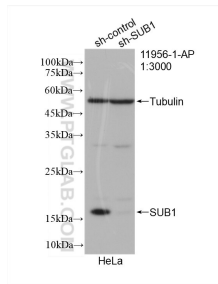
Immunohistochemical analysis of paraffin-embedded human gliomas tissue slide using 11956-1-AP (SUB1 antibody) at dilution of 1:100 (under 40x lens. Heat mediated antigen retrieval with Tris-EDTA buffer (pH 9.0).



rat liver tissue were subjected to SDS PAGE followed by western blot with 11956-1-AP (SUB1 Antibody) at dilution of 1:1000 incubated at room temperature for 1.5 hours.



Immunofluorescent analysis of (10% Formaldehyde) fixed HeLa cells using 11956-1-AP (SUB1 antibody) at dilution of 1:50 and Alexa Fluor 488-conjugated AffiniPure Goat Anti-Rabbit IgG(H+L).



WB result of SUB1 antibody (11956-1-AP; 1:3000; incubated at room temperature for 1.5 hours) with sh-Control and sh-SUB1 transfected HeLa cells.