

For Research Use Only

MCPH/BRIT1 Polyclonal antibody

Catalog Number: 11962-1-AP

Featured Product

4 Publications



Basic Information

Catalog Number:

11962-1-AP

Size:

150ul, Concentration: 1000 ug/ml by Nanodrop and 573 ug/ml by Bradford method using BSA as the standard;

Source:

Rabbit

Isotype:

IgG

Immunogen Catalog Number:

AG2567

GenBank Accession Number:

BC030702

GeneID (NCBI):

79648

UNIPROT ID:

Q8NEM0

Full Name:

microcephalin 1

Calculated MW:

93 kDa

Observed MW:

66 kDa, 100 kDa

Purification Method:

Antigen affinity purification

Recommended Dilutions:

WB 1:500-1:1000

IHC 1:20-1:200

Applications

Tested Applications:

WB, IHC, ELISA

Cited Applications:

WB, IHC

Species Specificity:

human, mouse

Cited Species:

human

Positive Controls:

WB : HeLa cells, L02 cells, MDA-MB-453s cells, mouse ovary tissue

IHC : human prostate cancer tissue, human kidney tissue

Note-IHC: suggested antigen retrieval with TE buffer pH 9.0; (*) Alternatively, antigen retrieval may be performed with citrate buffer pH 6.0

Background Information

Primary microcephaly refers to the clinical finding of a head circumference less than 3 standard deviations(SD) below the age- and sex-related mean, present at birth. MCPH1, the first gene identified as causative for primary microcephaly, encodes a multifunctional protein that notably is linked to DNA damage checkpoint, DNA repair by homologous recombination and DNA transcription. MCPH1 is associated with premature chromosome condensation in particular. There are three mainly isoforms encoded by MCPH1 gene, full-length MCPH1 (MCPH1-FL) (~100kd), lacking the C-terminal BRCT isoform 2(~70kd) and lacking middle region isoform 3(~50kd). (PMID: 22952573)

Notable Publications

Author	Pubmed ID	Journal	Application
Stephanie K Meyer	30303738	FASEB J	WB
Maria Arroyo	32144855	FEBS J	WB
Zerui Wang	33370873	Stem Cell Res	WB, IHC

Storage

Storage:

Store at -20°C. Stable for one year after shipment.

Storage Buffer:

PBS with 0.02% sodium azide and 50% glycerol pH 7.3.

Aliquoting is unnecessary for -20°C storage

*** 20ul sizes contain 0.1% BSA

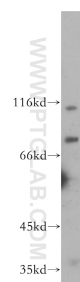
For technical support and original validation data for this product please contact:

T: 1 (888) 4PTGLAB (1-888-478-4522) (toll free in USA), or 1(312) 455-8498 (outside USA)

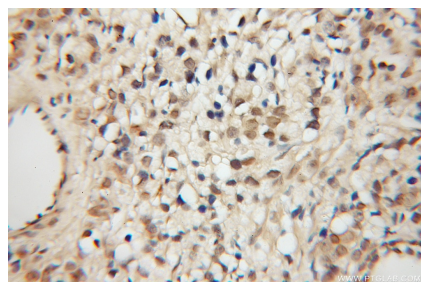
E: proteintech@ptglab.com
W: ptglab.com

This product is exclusively available under Proteintech Group brand and is not available to purchase from any other manufacturer.

Selected Validation Data



HeLa cells were subjected to SDS PAGE followed by western blot with 11962-1-AP (BRIT1 antibody) at dilution of 1:500 incubated at room temperature for 1.5 hours.



Immunohistochemical analysis of paraffin-embedded human prostate cancer using 11962-1-AP (BRIT1 antibody) at dilution of 1:50 (under 10x lens).