

For Research Use Only

EMG1 Polyclonal antibody

Catalog Number: 11965-1-AP

Featured Product

3 Publications



Basic Information

Catalog Number:

11965-1-AP

Size:

150ul, Concentration: 450 ug/ml by Nanodrop and 333 ug/ml by Bradford method using BSA as the standard;

Source:

Rabbit

Isotype:

IgG

Immunogen Catalog Number:

AG2575

GenBank Accession Number:

BC055314

GeneID (NCBI):

10436

UNIPROT ID:

Q92979

Full Name:

EMG1 nucleolar protein homolog (S. cerevisiae)

Calculated MW:

244 aa, 27 kDa

Observed MW:

27 kDa

Purification Method:

Antigen affinity purification

Recommended Dilutions:

WB 1:1000-1:6000

IP 0.5-4.0 ug for 1.0-3.0 mg of total protein lysate

IF/ICC 1:200-1:800

Applications

Tested Applications:

WB, IF/ICC, IP, ELISA

Cited Applications:

WB, IF

Species Specificity:

human, mouse, rat

Cited Species:

mouse, goat

Positive Controls:

WB : HEK-293 cells, HeLa cells, PC-3 cells

IP : HeLa cells,

IF/ICC : HeLa cells,

Background Information

EMG1, also named as NEP1, is a highly conserved protein initially identified as "Essential for Mitotic Growth" in yeast. EMG1 is required for maturation of the 18S rRNA and biogenesis of the 40S ribosomal subunit. EMG1 is the methyltransferase in the biosynthesis of m1acp3-Psi in eukaryotic 18S rRNAs. It has an essential role in 40S ribosomal subunit biogenesis independent on its methyltransferase activity. A mutation in human EMG1 gene causes Bowen-Conradi syndrome (BCS), an autosomal recessive disorder characterized by severely impaired prenatal and postnatal growth, profound psychomotor retardation, and death in early childhood.

Notable Publications

Author	Pubmed ID	Journal	Application
Zhipeng Sun	36499219	Int J Mol Sci	WB
Joy Armistead	25708872	Biochim Biophys Acta	IF
Lukasz Slomnicki	27053602	Mol Cell Proteomics	

Storage

Storage:

Store at -20°C. Stable for one year after shipment.

Storage Buffer:

PBS with 0.02% sodium azide and 50% glycerol pH 7.3.

Aliquoting is unnecessary for -20°C storage

*** 20ul sizes contain 0.1% BSA

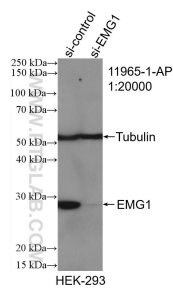
For technical support and original validation data for this product please contact:

T: 1 (888) 4PTGLAB (1-888-478-4522) (toll free in USA), or 1(312) 455-8498 (outside USA)

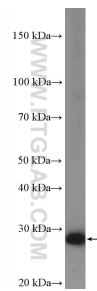
E: proteintech@ptglab.com
W: ptglab.com

This product is exclusively available under Proteintech Group brand and is not available to purchase from any other manufacturer.

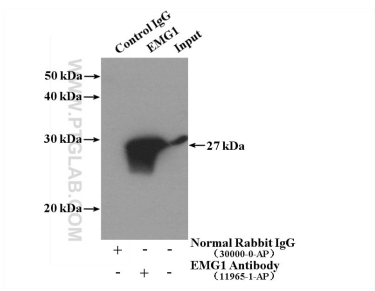
Selected Validation Data



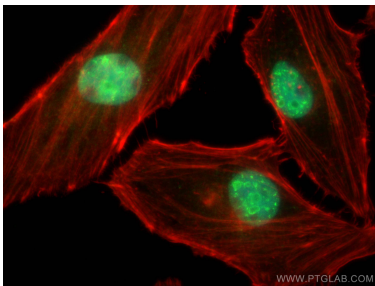
WB result of EMG1 antibody (11965-1-AP; 1:20000; incubated at room temperature for 1.5 hours) with sh-Control and sh-EMG1 transfected HEK-293 cells.



HEK-293 cells were subjected to SDS PAGE followed by western blot with 11965-1-AP (EMG1 Antibody) at dilution of 1:3000 incubated at 4 degree celsius over night.



IP result of anti-EMG1 (IP:11965-1-AP, 4ug; Detection:11965-1-AP 1:400) with HeLa cells lysate 1080ug.



Immunofluorescent analysis of (4% PFA) fixed HeLa cells using EMG1 antibody (11965-1-AP) at dilution of 1:400 and CoraLite®488-Conjugated AffiniPure Goat Anti-Rabbit IgG(H+L), CL594-phalloidin (red).