

For Research Use Only

TIPIN Polyclonal antibody

Catalog Number: 11972-2-AP **1 Publications**



Basic Information

Catalog Number: 11972-2-AP	GenBank Accession Number: BC000870	Purification Method: Antigen affinity purification
Size: 150ul , Concentration: 650 µg/ml by Nanodrop and 367 µg/ml by Bradford method using BSA as the standard;	GeneID (NCBI): 54962	Recommended Dilutions: WB 1:500-1:2000
Source: Rabbit	Full Name: TIMELESS interacting protein	
Isotype: IgG	Calculated MW: 301 aa, 34 kDa	
Immunogen Catalog Number: AG2595	Observed MW: 48 kDa	

Applications

Tested Applications: WB, ELISA	Positive Controls: WB : mouse brain tissue, rat brain tissue
Cited Applications: IHC	
Species Specificity: human, mouse, rat	
Cited Species: human	

Background Information

TIPIN, also named as TIMELESS-interacting protein, is a 301 amino acid protein, which belongs to the CSM3 family. TIPIN Plays an important role in the control of DNA replication and the maintenance of replication fork stability. TIPIN forms a complex with TIMELESS and this complex regulates DNA replication processes under both normal and stress conditions, stabilizes replication forks and influences both CHEK1 phosphorylation and the intra-S phase checkpoint in response to genotoxic stress. The calculated molecular weight of TIPIN is 34 kDa, but the result of WB is 55-60 kDa, which is similar to the result of publication.(PMID: 24830473)

Notable Publications

Author	Pubmed ID	Journal	Application
Hui Chen	35082931	Dis Markers	IHC

Storage

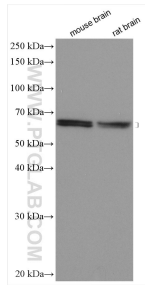
Storage:
Store at -20°C. Stable for one year after shipment.
Storage Buffer:
PBS with 0.02% sodium azide and 50% glycerol pH 7.3.
Aliquoting is unnecessary for -20°C storage

*** 20ul sizes contain 0.1% BSA

For technical support and original validation data for this product please contact:
T: 1 (888) 4PTGLAB (1-888-478-4522) (toll free in USA), or 1(312) 455-8498 (outside USA)
E: proteintech@ptglab.com
W: ptglab.com

This product is exclusively available under Proteintech Group brand and is not available to purchase from any other manufacturer.

Selected Validation Data



Various lysates were subjected to SDS PAGE followed by western blot with 11972-2-AP (TIPIN antibody) at dilution of 1:1000 incubated at room temperature for 1.5 hours.