

For Research Use Only

P2RY12 Polyclonal antibody

Catalog Number: 11976-1-AP

8 Publications



Basic Information

Catalog Number:

11976-1-AP

Size:

150ul, Concentration: 300 ug/ml by Nanodrop and 187 ug/ml by Bradford method using BSA as the standard;

Source:

Rabbit

Isotype:

IgG

Immunogen Catalog Number:

AG2601

GenBank Accession Number:

BC017898

GeneID (NCBI):

64805

UNIPROT ID:

Q9H244

Full Name:

purinergic receptor P2Y, G-protein coupled, 12

Calculated MW:

342 aa, 39 kDa

Observed MW:

45 kDa

Purification Method:

Antigen affinity purification

Recommended Dilutions:

WB 1:200-1:1000

Applications

Tested Applications:

WB, ELISA

Cited Applications:

WB, IF

Species Specificity:

human, mouse, rat

Cited Species:

human, mouse

Positive Controls:

WB: mouse spinal cord tissue, human adrenal gland tissue

Notable Publications

Author	Pubmed ID	Journal	Application
Annika Bub	35639208	Cell Mol Life Sci	WB
Jian J Li	32205255	Neurobiol Dis	WB
Shilpa Sharma	39467946	Purinergic Signal	WB

Storage

Storage:

Store at -20°C. Stable for one year after shipment.

Storage Buffer:

PBS with 0.02% sodium azide and 50% glycerol pH 7.3.

Aliquoting is unnecessary for -20°C storage

*** 20ul sizes contain 0.1% BSA

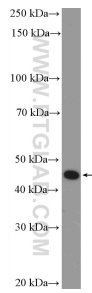
For technical support and original validation data for this product please contact:

T: 1 (888) 4PTGLAB (1-888-478-4522) (toll free in USA), or 1(312) 455-8498 (outside USA)

E: proteintech@ptglab.com
W: ptglab.com

This product is exclusively available under Proteintech Group brand and is not available to purchase from any other manufacturer.

Selected Validation Data



mouse spinal cord tissue were subjected to SDS PAGE followed by western blot with 11976-1-AP (P2RY12 Antibody) at dilution of 1:300 incubated at room temperature for 1.5 hours.