

For Research Use Only

IL-17RE Polyclonal antibody

Catalog Number: 11984-1-AP

2 Publications



Basic Information

Catalog Number:

11984-1-AP

Size:

150ul, Concentration: 300 ug/ml by Nanodrop and 233 ug/ml by Bradford method using BSA as the standard;

Source:

Rabbit

Isotype:

IgG

Immunogen Catalog Number:

AG2612

GenBank Accession Number:

BC063110

GeneID (NCBI):

132014

UNIPROT ID:

Q8NFR9

Full Name:

interleukin 17 receptor E

Calculated MW:

667 aa, 75 kDa

Observed MW:

75 kDa, 58 kDa

Purification Method:

Antigen affinity purification

Recommended Dilutions:

WB 1:500-1:1000

IHC 1:20-1:200

Applications

Tested Applications:

WB, IHC, ELISA

Cited Applications:

WB, IF, IHC

Species Specificity:

human, mouse

Cited Species:

human, mouse

Positive Controls:

WB : human kidney tissue, PC-3 cells

IHC : human pancreas cancer tissue,

Note-IHC: suggested antigen retrieval with TE buffer pH 9.0; (*) Alternatively, antigen retrieval may be performed with citrate buffer pH 6.0

Background Information

IL17RE, is a specific functional receptor for IL17C. It may be signaling through the NF-kappa-B and MAPK pathways. IL17Re may be a crucial regulator in innate immunity to bacterial pathogens. IL17RE has five isoforms with MW 31 kDa, 43 kDa, 58-62 kDa and 75 kDa.

Notable Publications

Author	Pubmed ID	Journal	Application
Pfeifer Philipp P	23221046	Am J Respir Cell Mol Biol	WB
Jingjing Wang	37235960	Int Immunopharmacol	IHC,IF

Storage

Storage:

Store at -20°C. Stable for one year after shipment.

Storage Buffer:

PBS with 0.02% sodium azide and 50% glycerol pH 7.3.

Aliquoting is unnecessary for -20°C storage

*** 20ul sizes contain 0.1% BSA

For technical support and original validation data for this product please contact:

T: 1 (888) 4PTGLAB (1-888-478-4522) (toll free in USA), or 1(312) 455-8498 (outside USA)

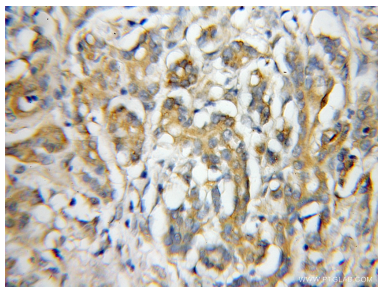
E: proteintech@ptglab.com
W: ptglab.com

This product is exclusively available under Proteintech Group brand and is not available to purchase from any other manufacturer.

Selected Validation Data



human kidney tissue were subjected to SDS PAGE followed by western blot with 11984-1-AP (IL17RE antibody) at dilution of 1:400 incubated at room temperature for 1.5 hours.



Immunohistochemical analysis of paraffin-embedded human pancreas cancer using 11984-1-AP (IL17RE antibody) at dilution of 1:50 (under 10x lens).